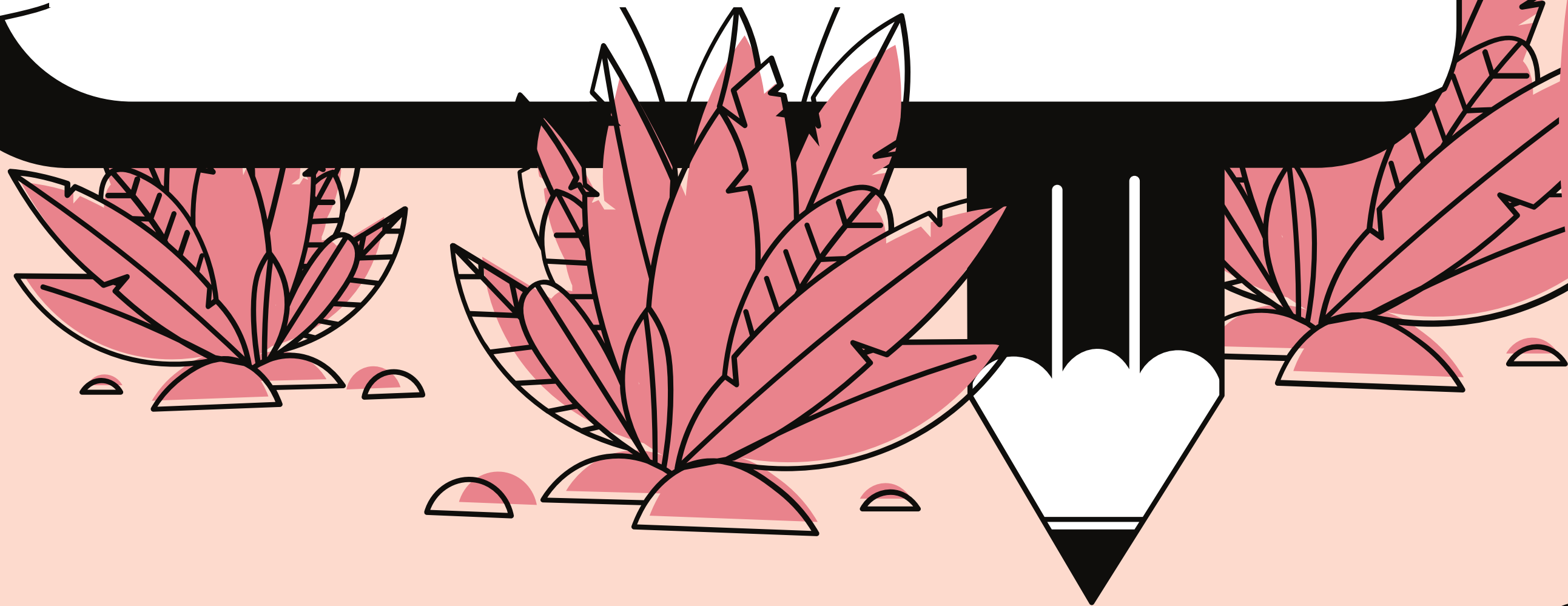
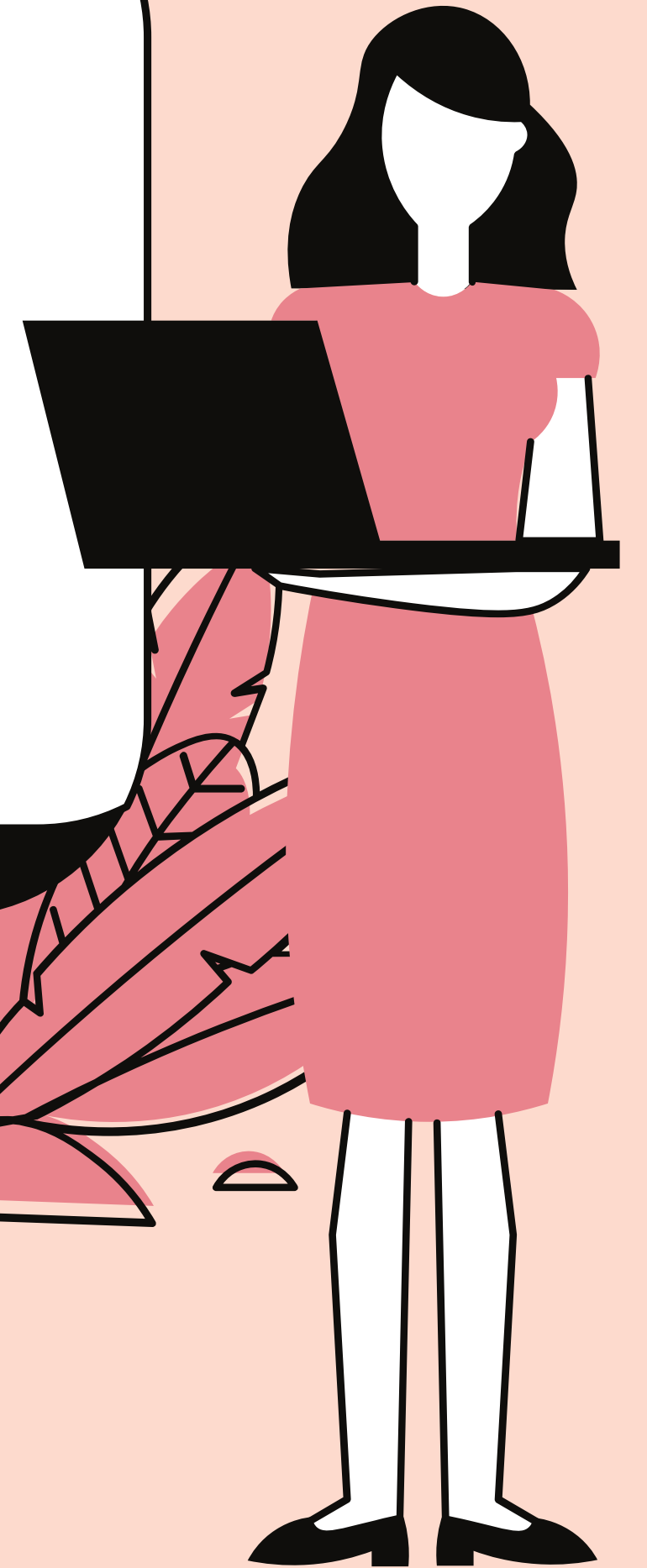
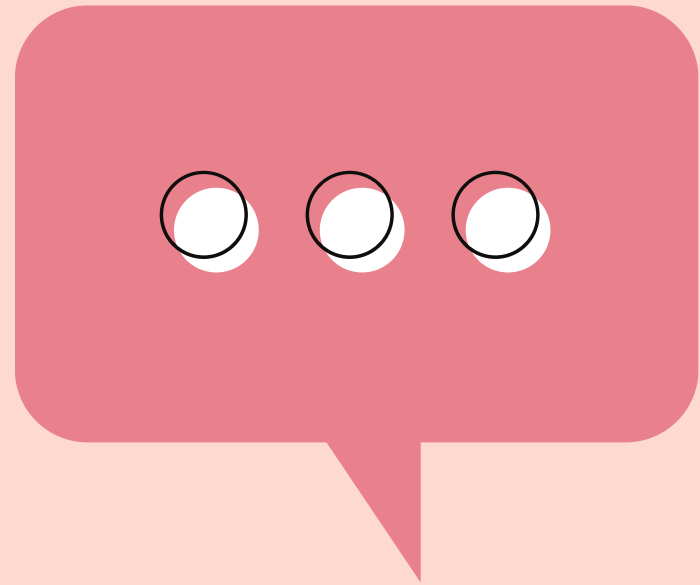


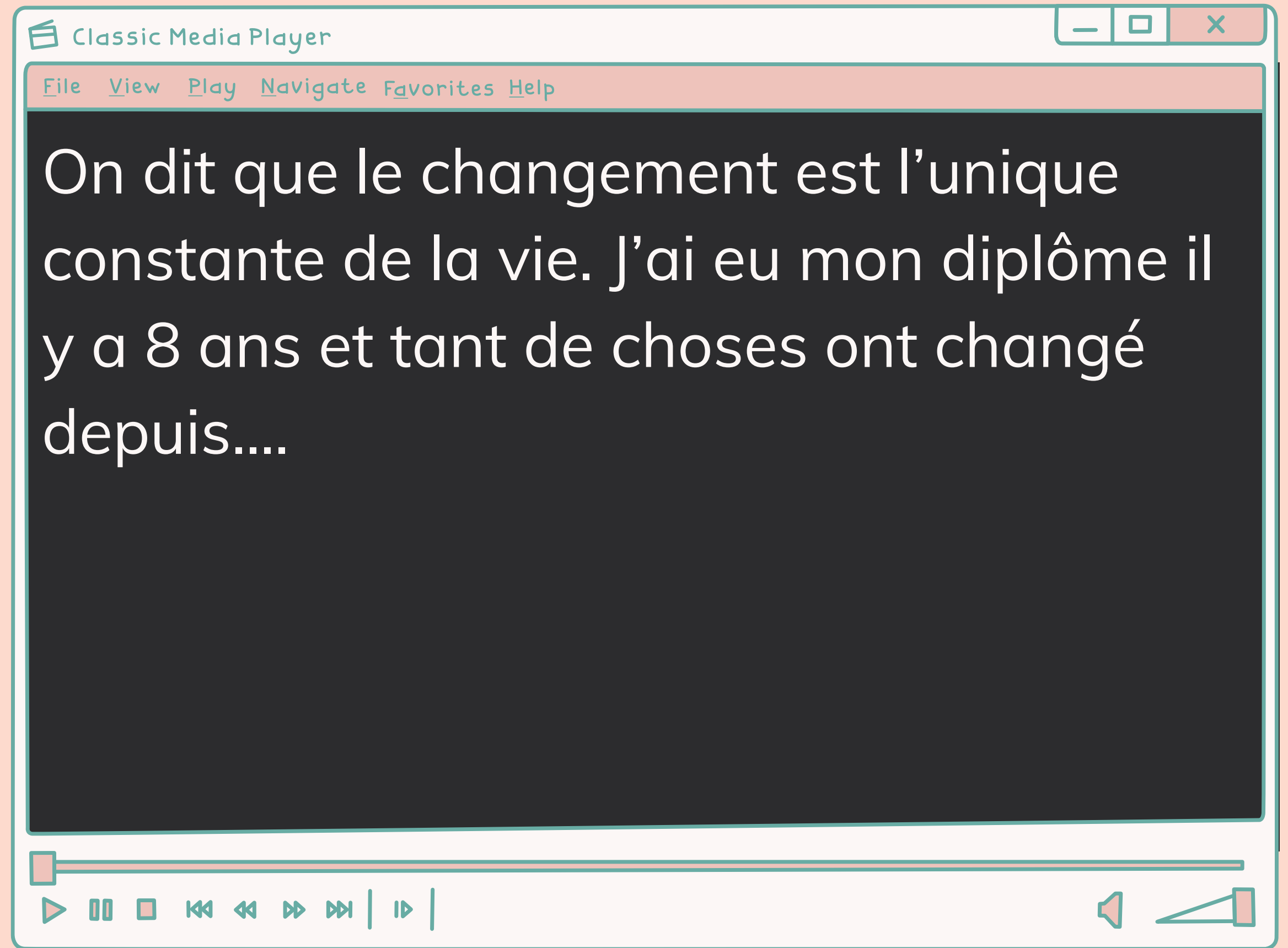
Back to School for the Planet

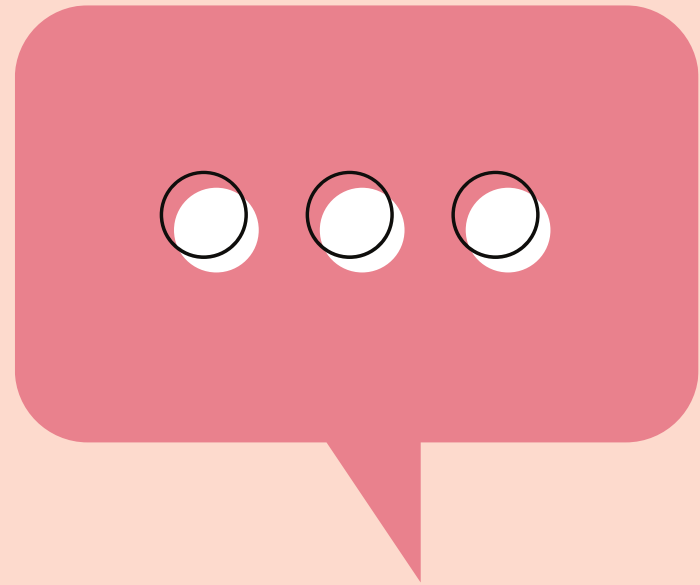
pour un impact positif sur la société



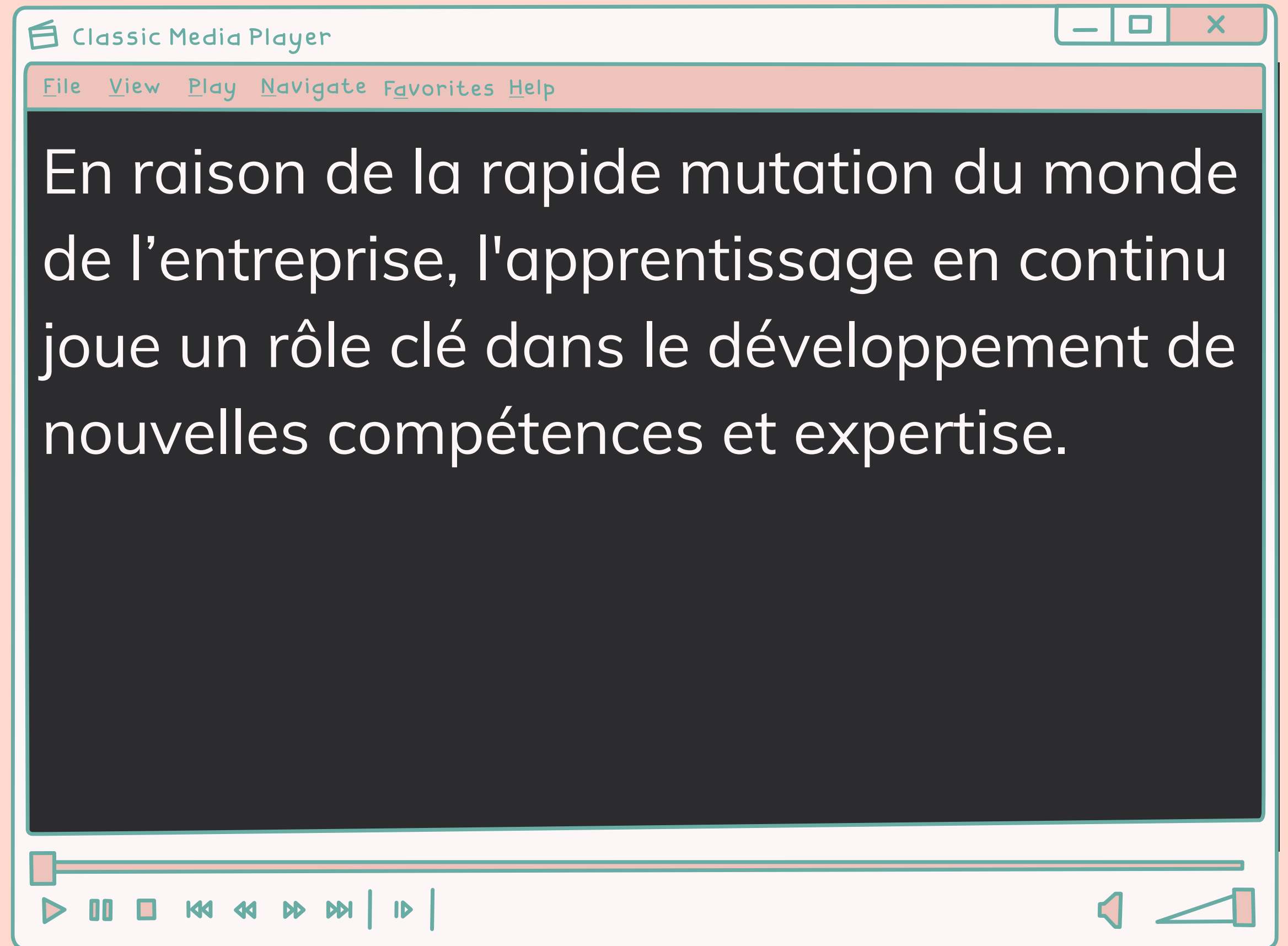


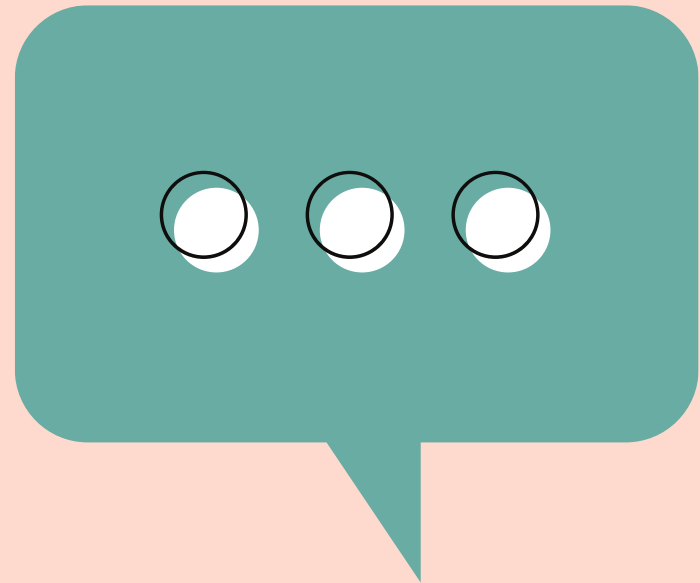
Vincent Guichard
Diplômé ESSEC-IMHI '12



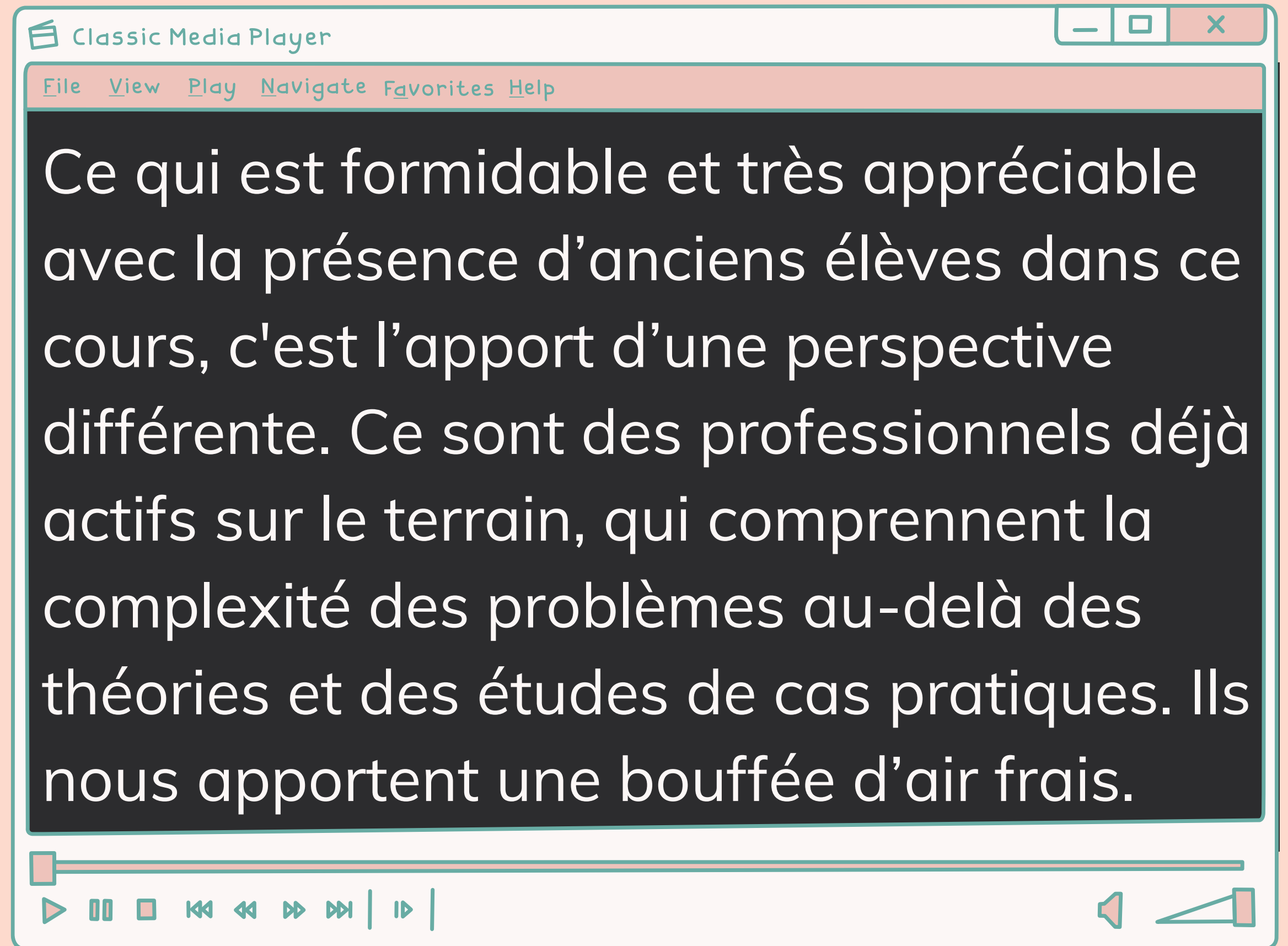
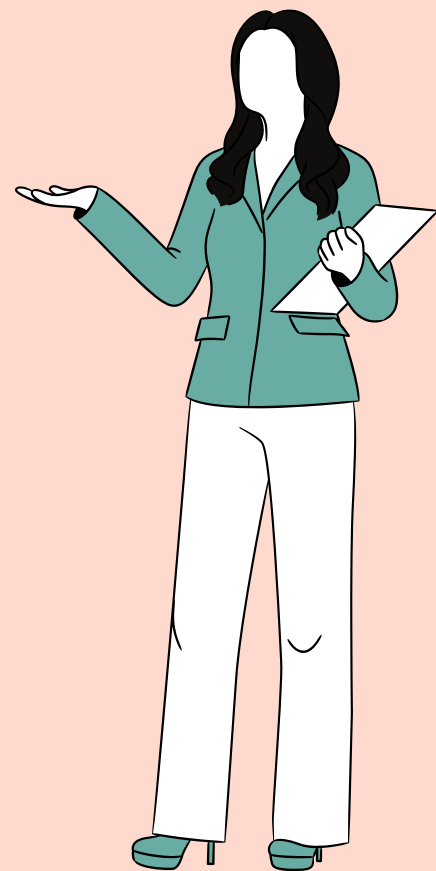


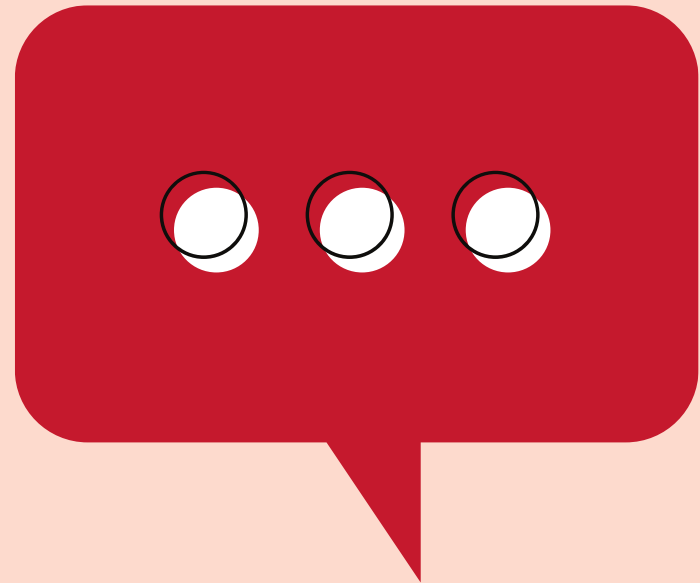
Aryphone Belly
Diplômée ESSEC-IMHI '05



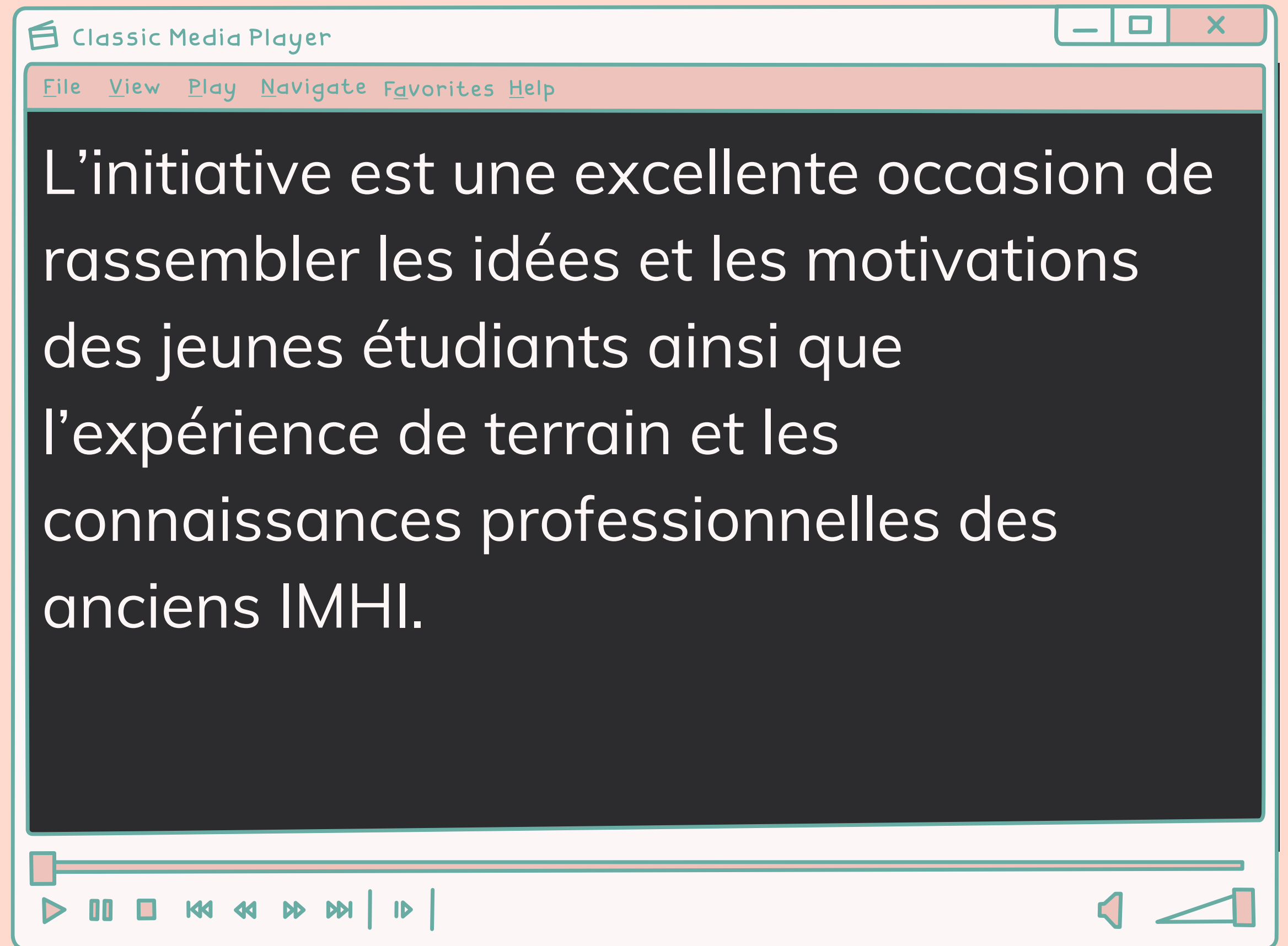
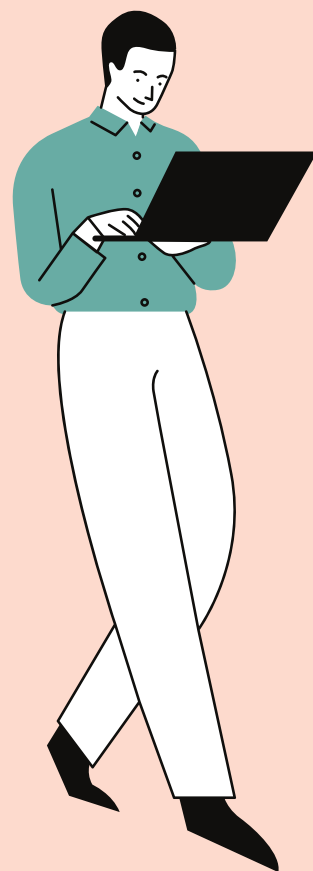


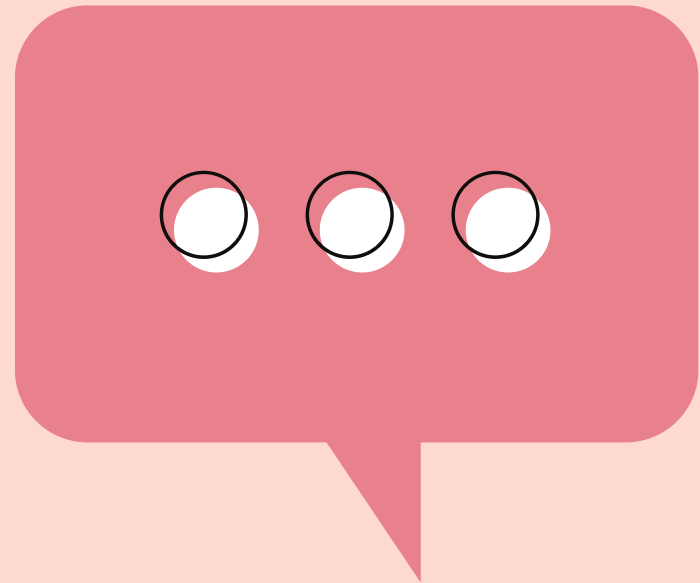
Lela Mélon, PhD
Chargée de cours - ESSEC





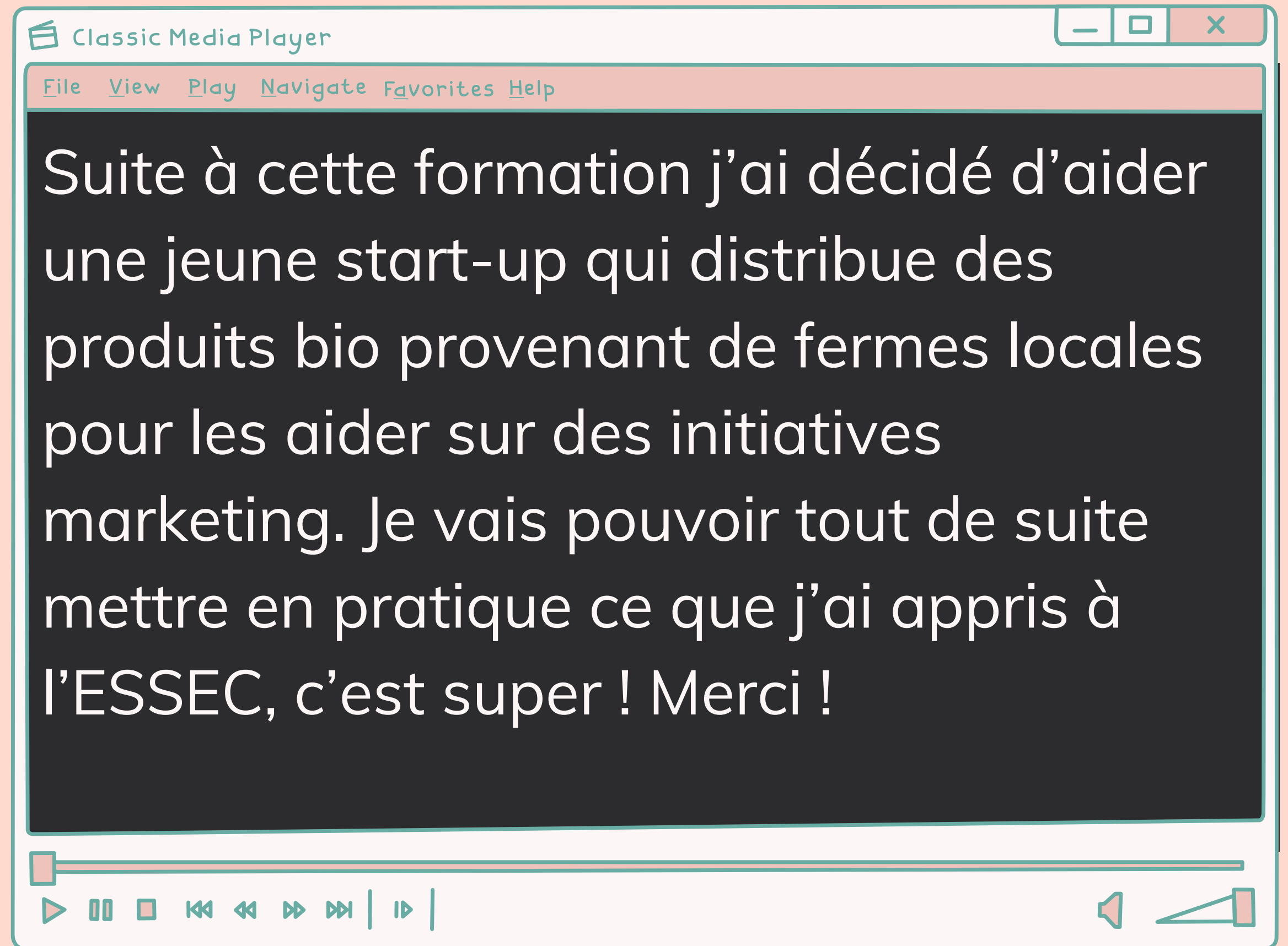
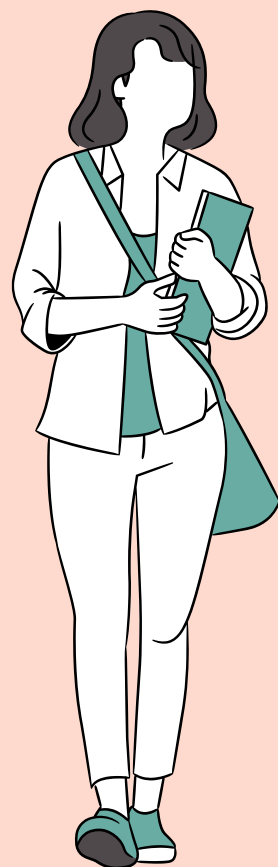
Johnny El Salamani
Etudiant ESSEC-IMHI '21





Marion Rudloff

Diplômée ESSEC-IMHI '05



Back to
School
for the
Planet



donner les clés
à ses diplômés
pour agir sur la société



Manifeste

Boîte à outils

Contenus

Événements

Communauté

Un accompagnement adapté
vers une offre pertinente
pour un apprentissage
tout au long de la vie
transformant



**Donne les clés
à vos diplômés
pour agir sur la société**



THE GLOBAL GOALS



Lifelong learning



Back to School for the Planet

pour un impact positif sur la société

