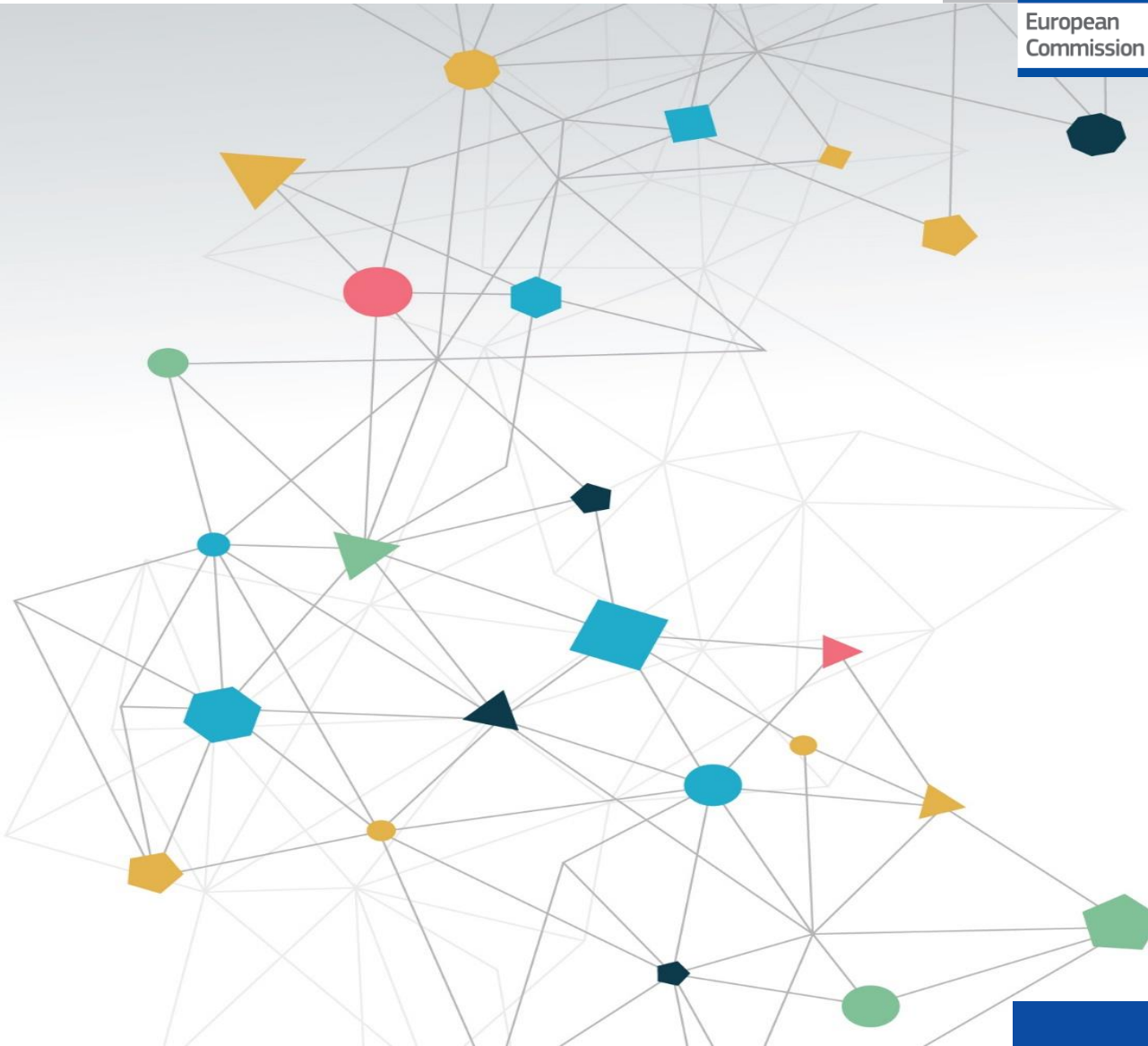




EU Energy Poverty Advisory Hub -

Dora Biondani, Senior project coordinator





Climate Alliance

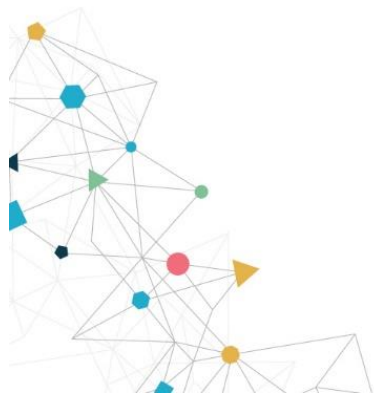


Dora Biondani

Climate Alliance, Project and Campaigns

Senior Project Coordinator

of the Energy Poverty Advisory Hub



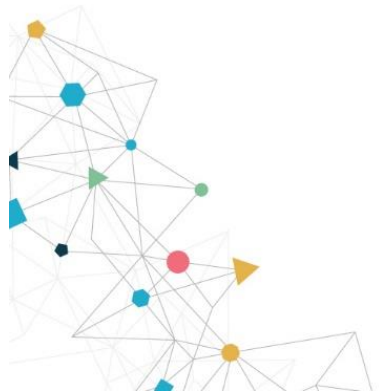
Climate Alliance



Climate Alliance

Climate Alliance is the largest European city network dedicated to climate action (1800+).

Our members, ranging from small rural towns to cities with populations in the millions, accept climate change as a global challenge that requires local solutions.



Energy Poverty Advisory Hub -

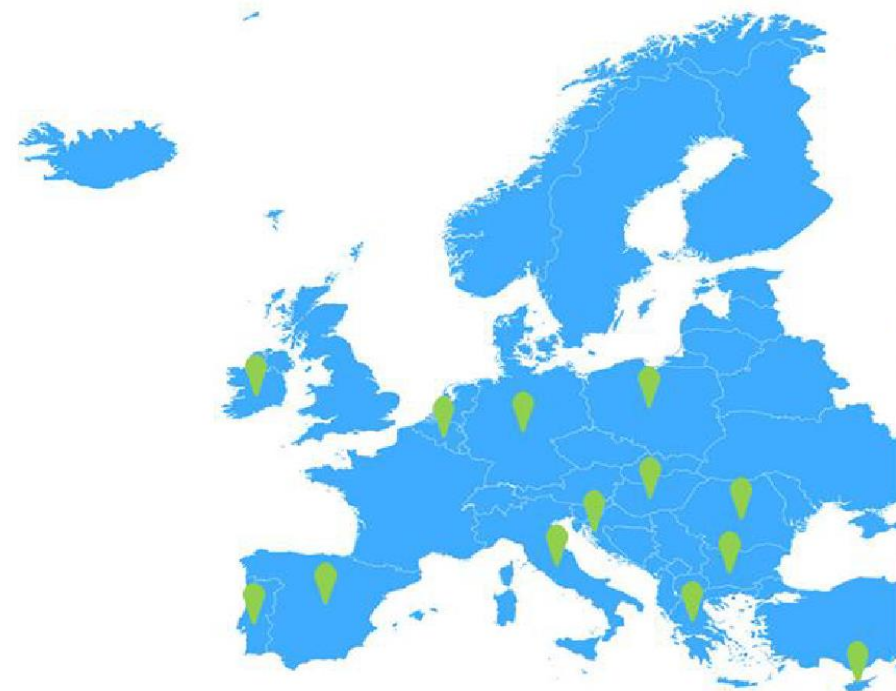
December 2020 – December 2024

EU

Energy Poverty Advisory Hub -



Climate Alliance



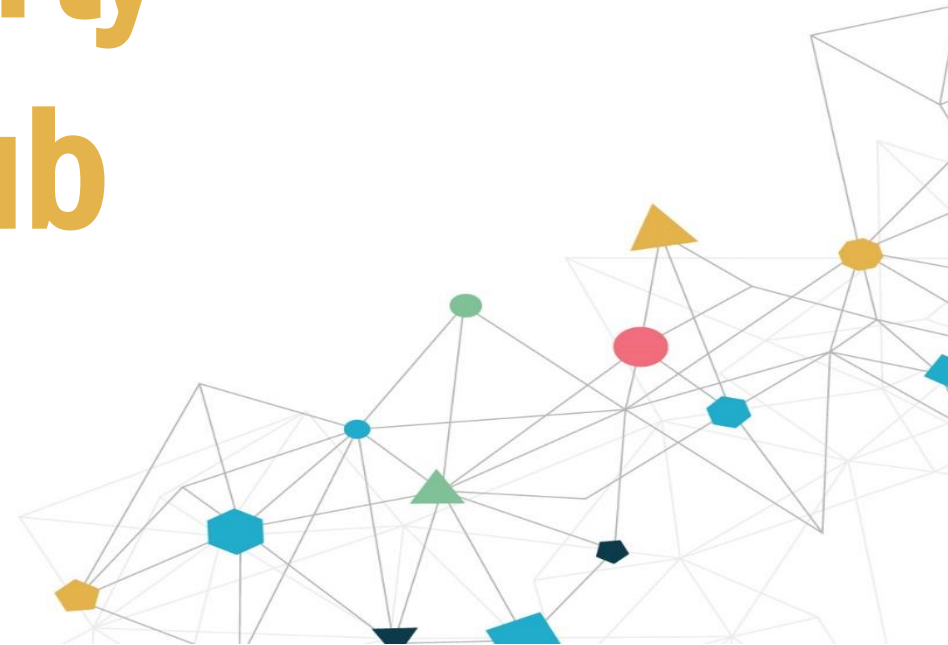
PORTUGAL
NOVA
SPAIN
ecoserveis
IRELAND
3 Counties Energy Agency
BELGIUM
Climate Alliance Brussels Office
GERMANY
Climate Alliance Germany Office
ITALY
AISFOR
CROATIA
DOOR
GREECE
Anatoliki
CYPRUS
Cyprus Energy Agency
HUNGARY
Climate Alliance Hungary Office
BULGARIA
Sofia Energy Centre
ROMANIA
Ashoka
POLAND
Polish Network of Energy Cities



European
Commission



Energy Poverty Advisory Hub



Summary

- ***Energy Poverty Advisory Hub***
- ***How use EPAH services to*** start and/or proceed in the process
to tackle energy poverty

Energy Poverty Advisory Hub

The Energy Poverty Advisory Hub, the leading EU initiative run by the European Commission at the request of the European Parliament, is a collaborative network of stakeholders aiming to eradicate Energy Poverty and accelerate the just energy transition of European local governments.



EU Energy Poverty Advisory Hub



Vision

Eradicate energy poverty and accelerate the just energy transition of European local governments

Mission

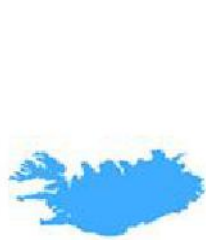
To be the center of energy poverty experience and expertise in Europe



Energy Poverty Advisory Hub



Climate Alliance



PORTUGAL

NOVA

SPAIN

ecoserveis

IRELAND

3 Counties Energy Agency

BELGIUM

Climate Alliance Brussels Office

GERMANY

Climate Alliance Germany Office

ITALY

AISFOR

CROATIA

DOOR

GREECE

Anatoliki

CYPRUS

Cyprus Energy Agency

HUNGARY

Climate Alliance Hungary Office

BULGARIA

Sofia Energy Centre

ROMANIA

Ashoka

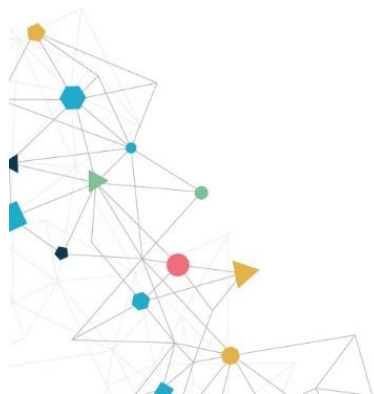
POLAND

Polish Network of Energy Cities

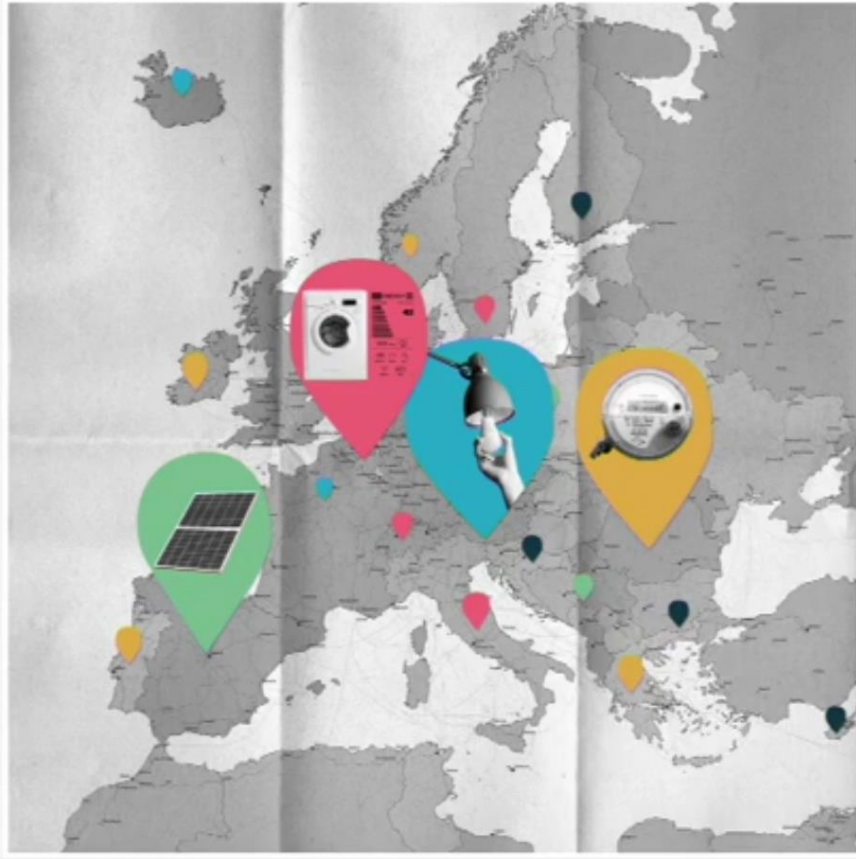


European
Commission

Foundation



What we do



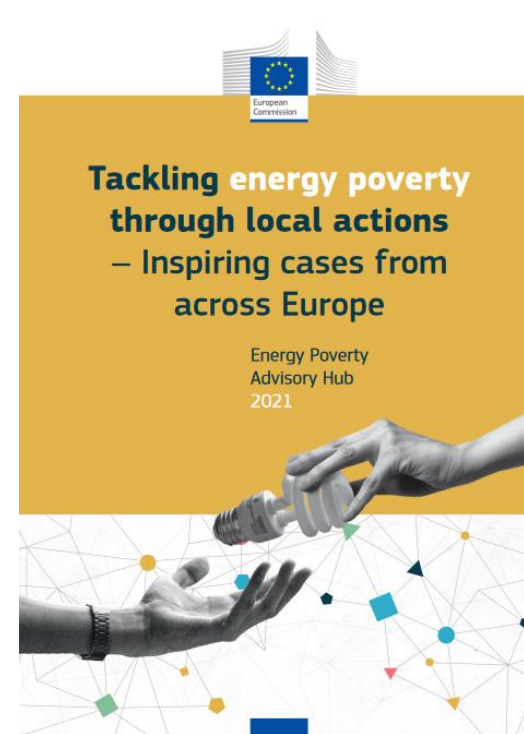
Focus on local level

*Create synergies with all layers of
governance*

What we do



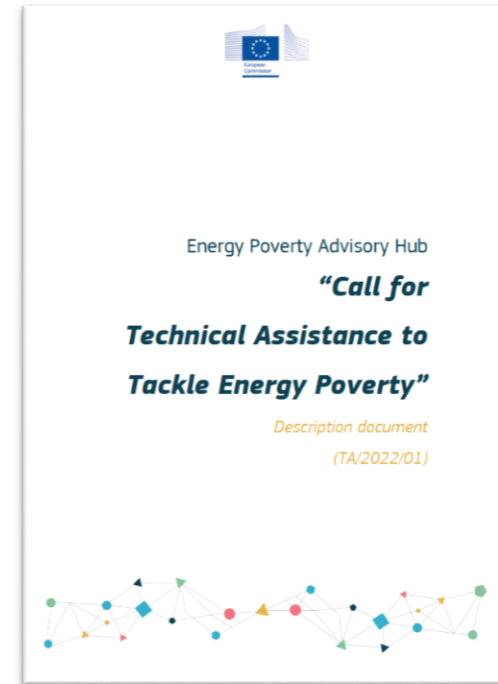
Research & practical guides



What we do



Direct support



What we do



E-learning and knowledge sharing



Introduction to energy poverty and the EPAH – Introductory course



The "Introduction to energy poverty and the EPAH – *Introductory course*" is a short course open to all stakeholders interested in addressing energy poverty. It provides an overview of energy poverty from a practical-political perspective.


The course is open to all, and no prerequisites are needed.

The duration is approximately one hour and is made up of six lessons divided into three modules, which can be taken individually. Participants that complete all the modules will receive a course certificate.


The course is available in English with subtitles in 23 European languages.

Registration to the course is offered continuously. Every 1st and 15th of each month, the registrations will be checked and accepted. The user will receive an automatic notification (via email) with the indications to access the online platform.

To follow the course, you need to create an account to the Energy Poverty Advisory Hub platform and sign up for the course.

 **Open to all**

 **Available now**

 **Estimated effort:** 1 hour

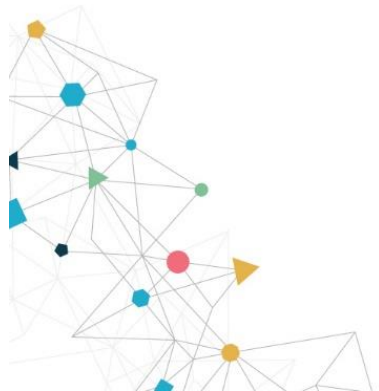
 **Alternative languages:**

Italian
Spanish

[Join the course](#)

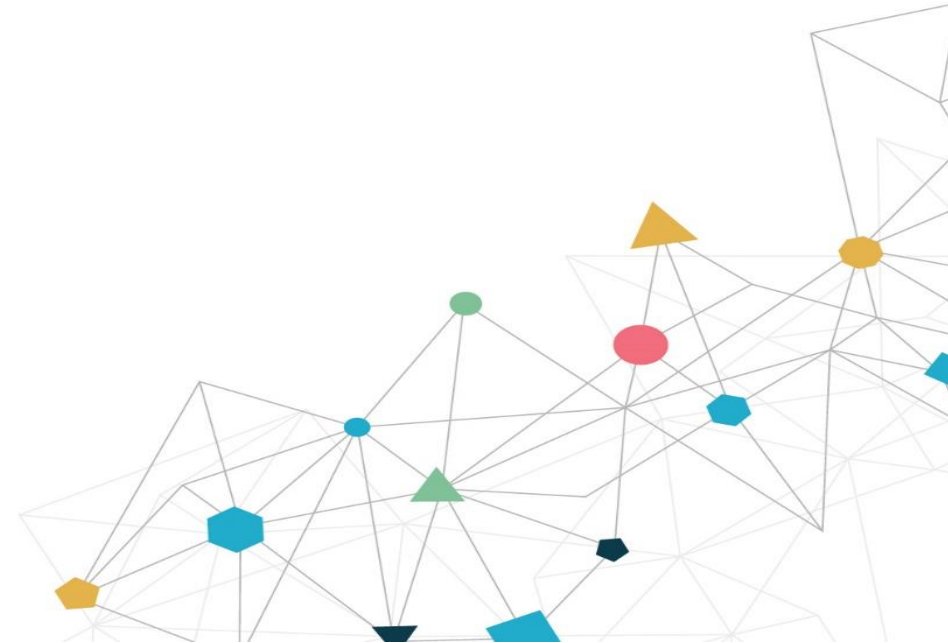
What we do

Building a collaborative network





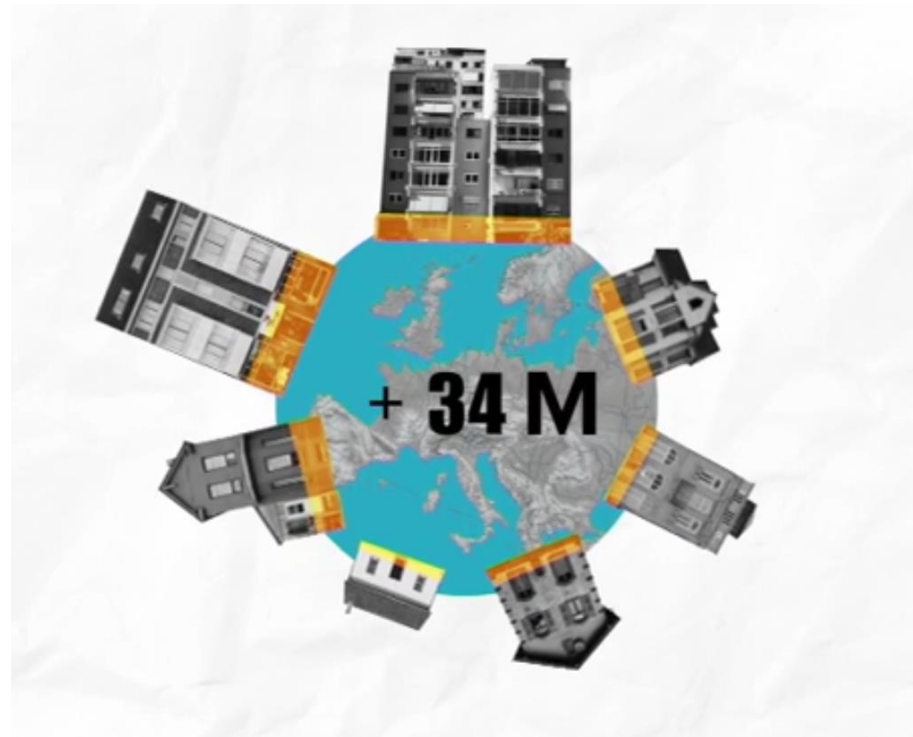
Energy Poverty



Energy Poverty

According to the European Commission:

“energy poverty is a situation in which households are unable to access essential energy services.”



Energy Poverty – A socio-technical challenge

Heating



Cooling



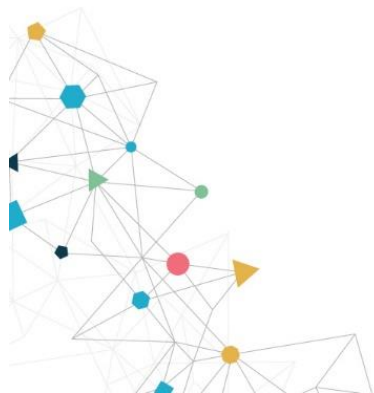
Vulnerable
consumers



Wellbeing

Social
inclusion

Energy Poverty Challenges





Local Solutions



EPAH methodology

The planning phase focuses on action planning.

Planning

Informed-based planning

Energy poverty
diagnosis

Diagnosis

Choosing and updating indicators

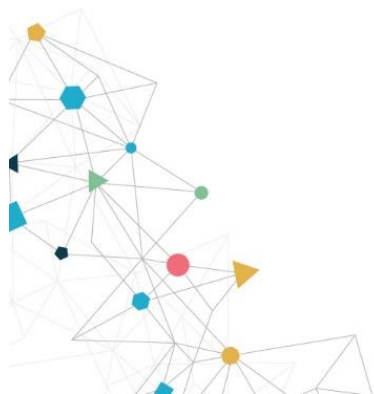
Local Social
Climate Plan

Implementation

Deployment & monitoring

Impact
assessment

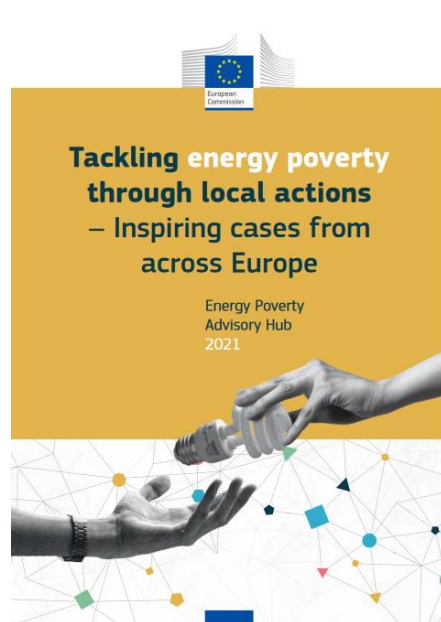
The implementing phase constitutes the actual deployment of the Local Social Climate Plan.



Already available: Inspiring local solutions

The report

Tackling energy poverty through local actions – Inspiring cases from across Europe



Available in 27
languages

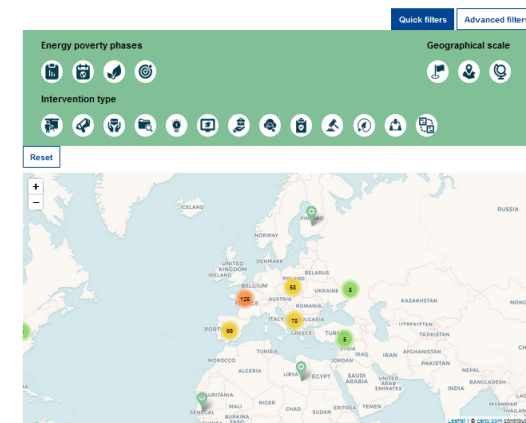
The

EPAH ATLAS

EPAH ATLAS

The Energy Poverty Advisory Hub has collected more than 200 inspirational cases during a research period that took place in 2021. The EPAH ATLAS is an online interactive database that allows visitors to discover local and international projects as well as measures addressing energy poverty across the world. Visitors can explore the interactive map, view a list of all projects and read more information about any case. A list of quick and advanced filters allows visitors to browse through the cases in an easy and effective way.

Is your case, project or measure, not part of the EPAH ATLAS yet? Submit your work. Download the [submission template](#) (in [Excel](#)), fill in all the relevant information and send it to the EPAH helpdesk at: info@energypoverty.eu. Your case will be added to the EPAH ATLAS. If your project/measure is already part of the database but wish to submit changes, you can contact the EPAH helpdesk too.



www.energypoverty.eu

Already available: Inspiring local solutions

8 TACKLING ENERGY POVERTY THROUGH LOCAL ACTIONS – INSPIRING CASES FROM ACROSS EUROPE

Audits and interventions in homes experiencing energy poverty

2020 2021

The Barcelona Provincial Council organised **Audits and interventions in homes in a position of vulnerability**. This is a cross-departmental initiative promoted by the areas of Social Welfare, Environment and Housing of the Provincial Council, which offers town councils actions to enhance the energy efficiency of homes experiencing energy poverty to reduce expenditure on basic utilities (electricity, water and gas) and enhance quality of life.

Geographical scale: Regional

Barcelona, Catalunya, Spain

Since it began, two editions were organized with the 2021 edition reaching almost 1,200 energy audits. In line with the EU Renovation Wave and the EU Green Deal, the programme strives to:

- Improve the energy efficiency of homes, and health and comfort conditions by conducting a home energy audit.
- Reduce the costs of utilities and empower users, provide tariff-related advice to align contracts to actual needs.
- Assist in procedures with supply companies to reduce spending on utilities.
- Deliver training on efficient consumer habits and consumer rights and identify broader intervention needs to foster energy efficiency improvement.

Energy poverty phases:

- Diagnosis
- Planning
- Implementation
- Impact

Intervention type: Communication campaign, consumer advice, protection and empowerment, household energy efficiency and retrofitment, stakeholder engagement, transparency and information sharing

The programme develops the following activities:

- Actions, free-of-charge and meetings with facilitators from local authorities are planned.
- Two visits by energy efficiency and social intervention professionals in the beneficiaries' homes are taking place. The visits include the collection of data on the social background of the beneficiaries, in the home, an energy assessment and the installation of basic elements for energy efficiency. The visits provide personalised advice for efficient consumption and guidance on adjusting contracts to meet the beneficiaries' actual needs, and tariff-related processing steps to ensure the services contracted match their actual needs and reduce utility costs.
- A report is compiled on the actions carried out for the administration of each town. Aggregate reports are prepared on all actions undertaken in each town. Sessions are organized to present the outcomes of the interventions. The reports are uploaded to an online tool that allows actions and documents to be managed digitally and to link contractor companies, Barcelona Provincial Council and individual town councils.

With a budget of about 500,000 euros, it manages to reach 5,000 people through visits and actions, carry out about 2,000 actions to optimise utility contracts, reduce the cost of their utility bills by 19%, save 225€/year per home on electricity bills and set up for free almost 23,000 energy efficiency elements.

Potential challenges are related to the stakeholders' involvement, contact with beneficiaries (potential suspicion about receiving home visits), information flow between social workers and beneficiaries and follow-up after the interventions. The main weaknesses were the limited timeframe and that the proposed improvements were not implemented during phase 2.

Topics: Air quality, health, behaviour, heating and cooling systems, household appliances, climate change, indoor comfort, information and awareness, insulation, economic crisis, quality of dwellings, energy access and consumption, energy audits, safety, energy efficiency, energy prices, social support, vulnerable consumers

The professionals:

- Energy efficiency technicians
- Social intervention technicians (e.g. social workers, social educators, pedagogues, psycho-pedagogues, psychologists, sociologists, social integration technicians)

The partners: Local authority, University/Research centre, La Factoria, Gestión y Consultoría (Private energy services company), EGM Estable i Eficiencia Energética (private company), SM Sistemas Medioambientales (private company)

Funding: Local funds by the Barcelona Provincial Council

Type of stakeholders: Energy supplier, general population

Benefited from the project: Children, disabled, elderly, low-income

9

Slime (Service Local d'Intervention pour la Maîtrise de l'Energie)



European
Commission

Already available: Introductory Course

The Introduction to energy poverty and the EPAH – Introductory course



Introduction to energy poverty and the EPAH – Introductory course



The "Introduction to energy poverty and the EPAH – *Introductory course*" is a short course open to all stakeholders interested in addressing energy poverty. It provides an overview of energy poverty from a practical–political perspective.

The course is open to all, and no prerequisites are needed.

The duration is approximately one hour and is made up of six lessons divided into three modules, which can be taken individually. Participants that complete all the modules will receive a course certificate.


The course is available in English with subtitles in 23 European languages.

Registration to the course is offered continuously. Every 1st and 15th of each month, the registrations will be checked and accepted. The user will receive an automatic notification (via email) with the indications to access the online platform.

To follow the course, you need to create an account to the Energy Poverty Advisory Hub platform and sign up for the course.

 **Open to all**

 **Available now**

 **Estimated effort:** 1 hour

 **Alternative languages:**

Italian
Spanish

Join the course

Already available: Bringing Energy Poverty Research Into Local Practice

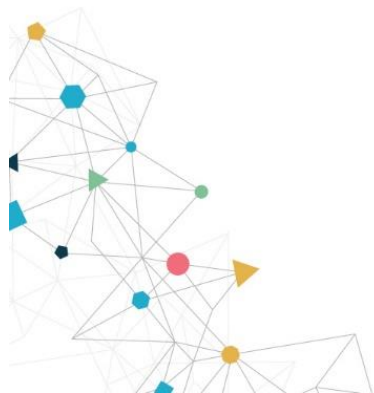
The

Bringing Energy Poverty Research into Local Practice: Exploring Subnational Scale Analyses



Scientific literature review of studies that delve into energy poverty assessment and the identification and targeting of the energy-poor population at subnational spatial scales (smaller than national)

EPAH newsletter social and helpdesk active





More content to come

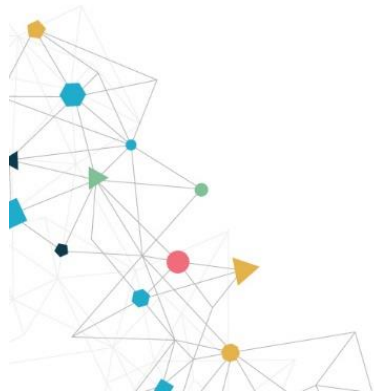


Handbooks

An action-oriented guide to start taking concrete action to combat energy poverty. With different information on:

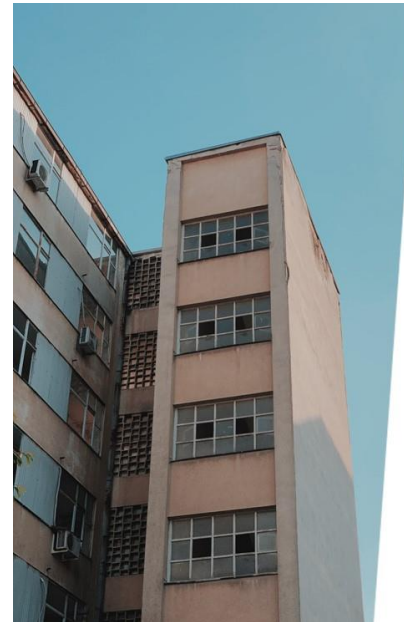
- how to diagnose your local energy poverty situation
- how to plan your actions to reduce energy poverty
- how to implement your actions

Ongoing research on indicators and build on the experience in the upcoming years



Events

Different conferences, webinars and events will be organized in different countries around Europe with the purpose to increase awareness about energy poverty and boost exchange of expertise and knowledge.



ONLINE EVENT

16 June 2021, 09:00 am CEST

“The new
**Energy Poverty
Advisory Hub:**
local action against
energy poverty”

@ *Covenant of Mayors Investment Forum*





Keep in touch

info@energypoverty.eu

dora.biondani@energypoverty.eu

WEBSITE

www.energypoverty.eu