



OECD CHAMPION MAYORS
for Inclusive Growth

Promoting climate action and resilience through a territorial approach



6 December 2023



3:00 PM - 4:00 PM



Japan Pavilion & online

This session will launch the OECD report “**A Territorial Approach to Climate Action and Resilience**” that synthesises three years of work under the OECD TACAR Programme, supported by the government of Japan.

Register now



Yutaka Matsuzawa
Vice-Minister for Global-
Environmental Affairs,
Japan



Lamia Kamal-Chaoui
Director, OECD Centre for
Entrepreneurship, SMEs,
Regions and Cities



Angie Fyfe
Executive Director
ICLEI - Local Governments
for Sustainability



Ronan Dantec
President
Climate Chance
Association



Katja Dörner
Mayor
City of Bonn
Germany



Jaime Pumarejo
Mayor
City of Barranquilla
Colombia



Raffi Balian
Senior Policy Advisor
Office of Special President
Envoy for Climate



<https://oecdogito.blog/>



@OECD_local



/oecd-local



www.oecd.org/cfe

Promoting climate action and resilience through a territorial approach

Cities and regions account for:



60%

of climate related investment



69%

of climate expenditure

The path to net zero is different in different places:



Transport emissions per capita are **2X** as high in remote rural regions.

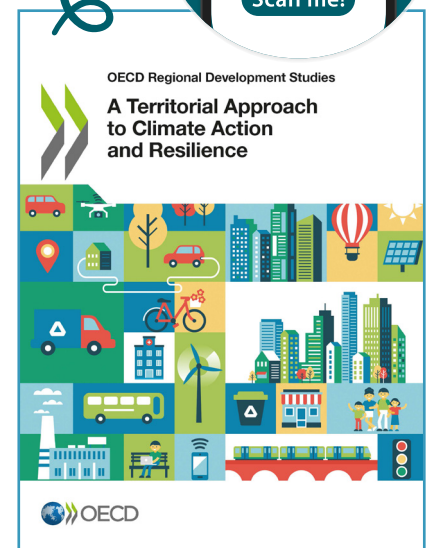


Building emissions are **3X** as high in large cities than in rural areas.

Climate risks are different in different places:



Larger cities are heating up nearly **2X** as fast as small cities.



How to implement a Territorial Indicator Framework?

Dive into the data

45 indicators for

1 200 metropolitan areas

2 800 regions across the OECD

Policy checklist

Climate-proof **regional development**

Enable and scale-up **local** climate action and resilience

Integrate a place-based perspective into **climate policy**

Practices

Learn from practices from

36

countries.

About us

The OECD Centre for Entrepreneurship, SMEs, Regions and Cities (CFE) helps local and national governments unleash the potential of entrepreneurs and small and medium-sized enterprises, promote inclusive and sustainable regions and cities, boost local job creation and implement sound tourism policies.

Questions? Contact Tadashi.Matsumoto@oecd.org



<https://oecdCogito.blog/>



@OECD_local



/oecd-local



www.oecd.org/cfe