



Présidence belge du Conseil de l'Union européenne

# Sommet Climate Chance Europe 2024 Wallonie

13

Quelle intégration des échelons locaux dans les politiques nationales d'adaptation en Europe ?

*How can local levels be integrated into national adaptation policies in Europe?*





## Ronan Dantec

---

President and Founder, Climate  
Chance

## Intervenants – *Speakers*



**Tania Martha Thomas**

---

Research Officer, Global Observatory of  
Climate Action, Climate Chance



**Luc Bas**

---

Director of Climate Risk Assessment Center  
(CERAC), Service public fédéral Santé  
publique



**Irene Bonvissuto**

---

Team Leader, EU Mission Adaptation to  
Climate Change



**Angelika Tamasova**

---

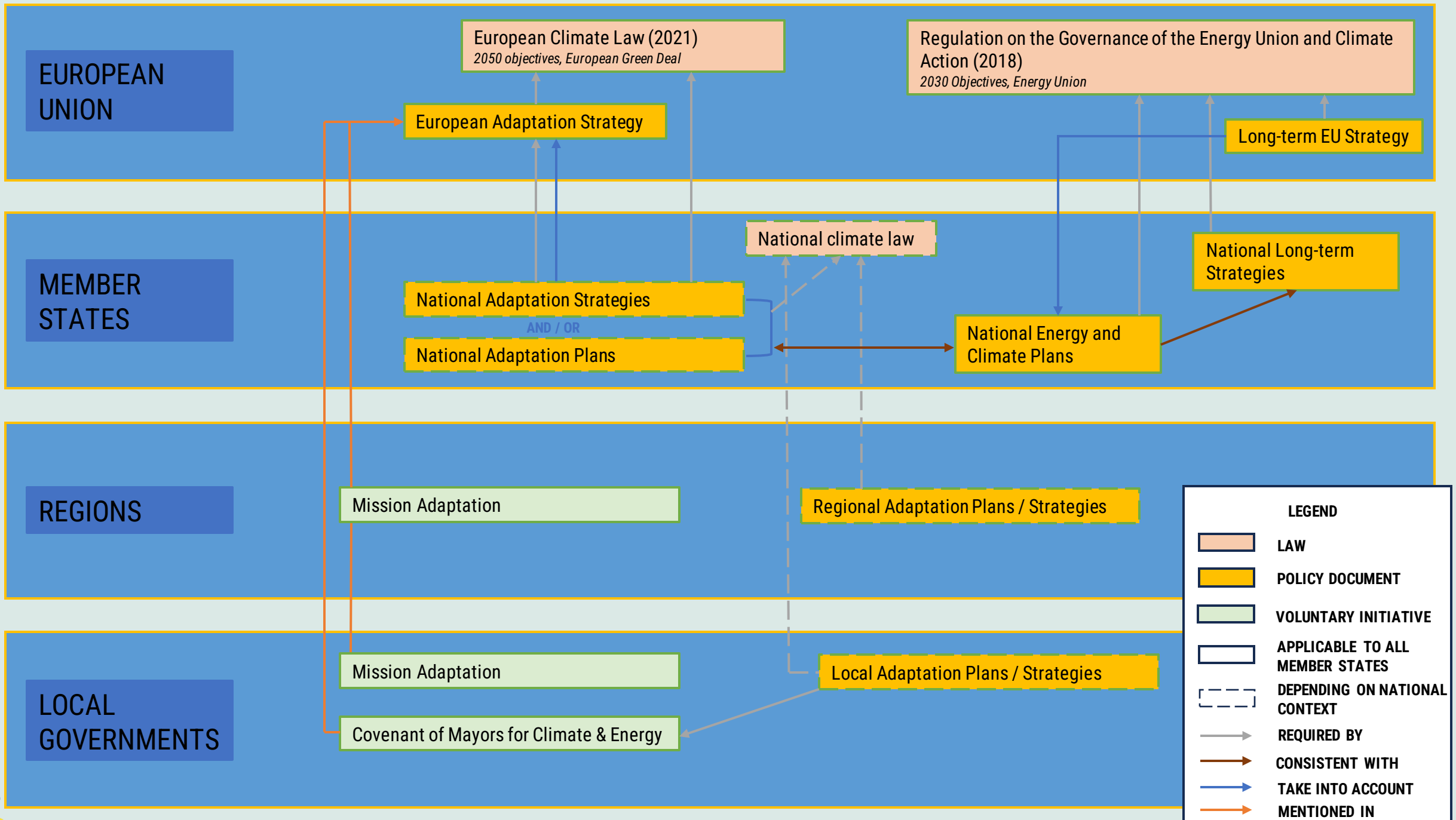
Climate Change Adaptation Expert, European  
Environment Agency

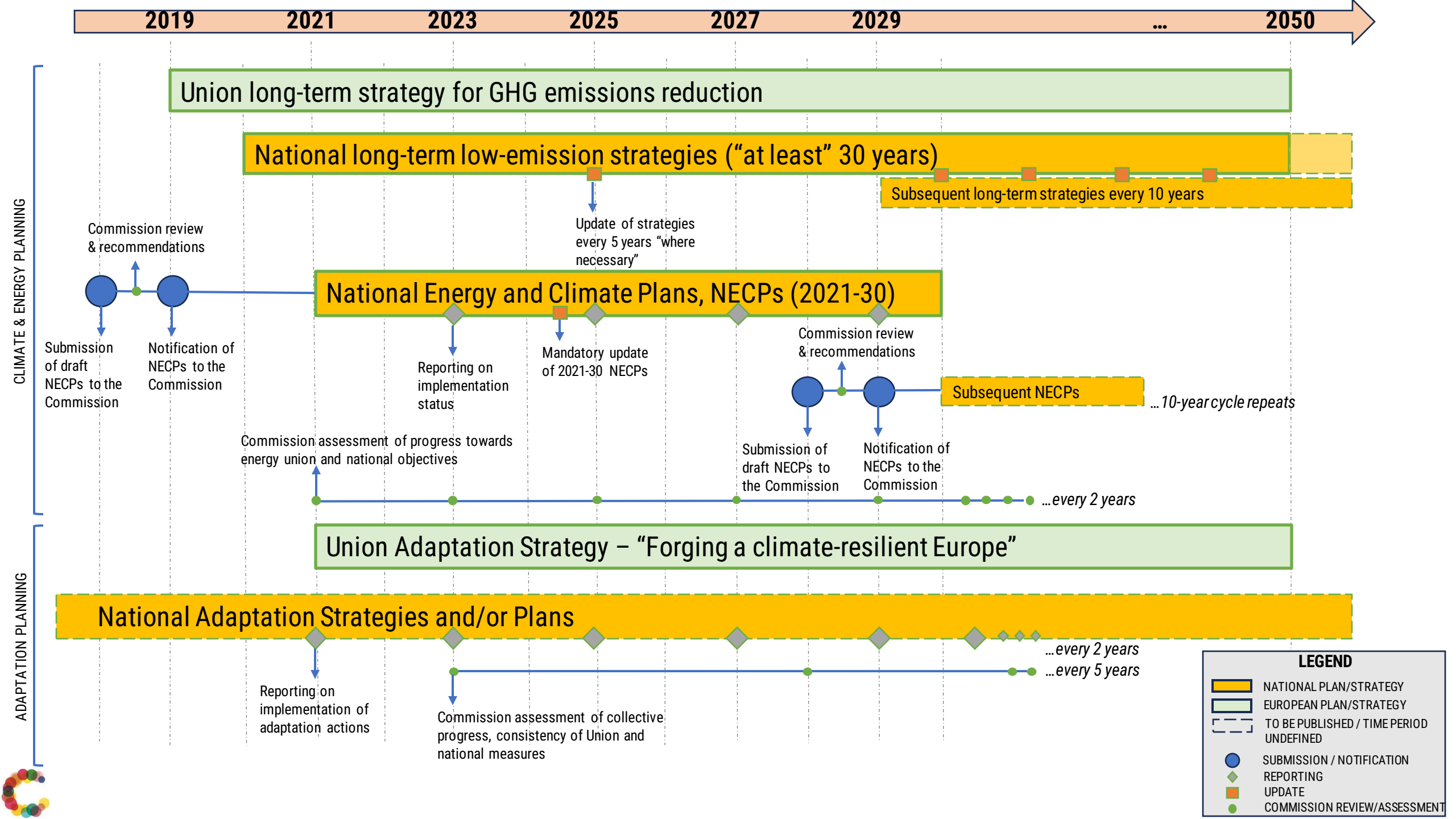


**Vasileios Latinos**

---

Head of Resilience and Climate Adaptation,  
ICLEI Europe





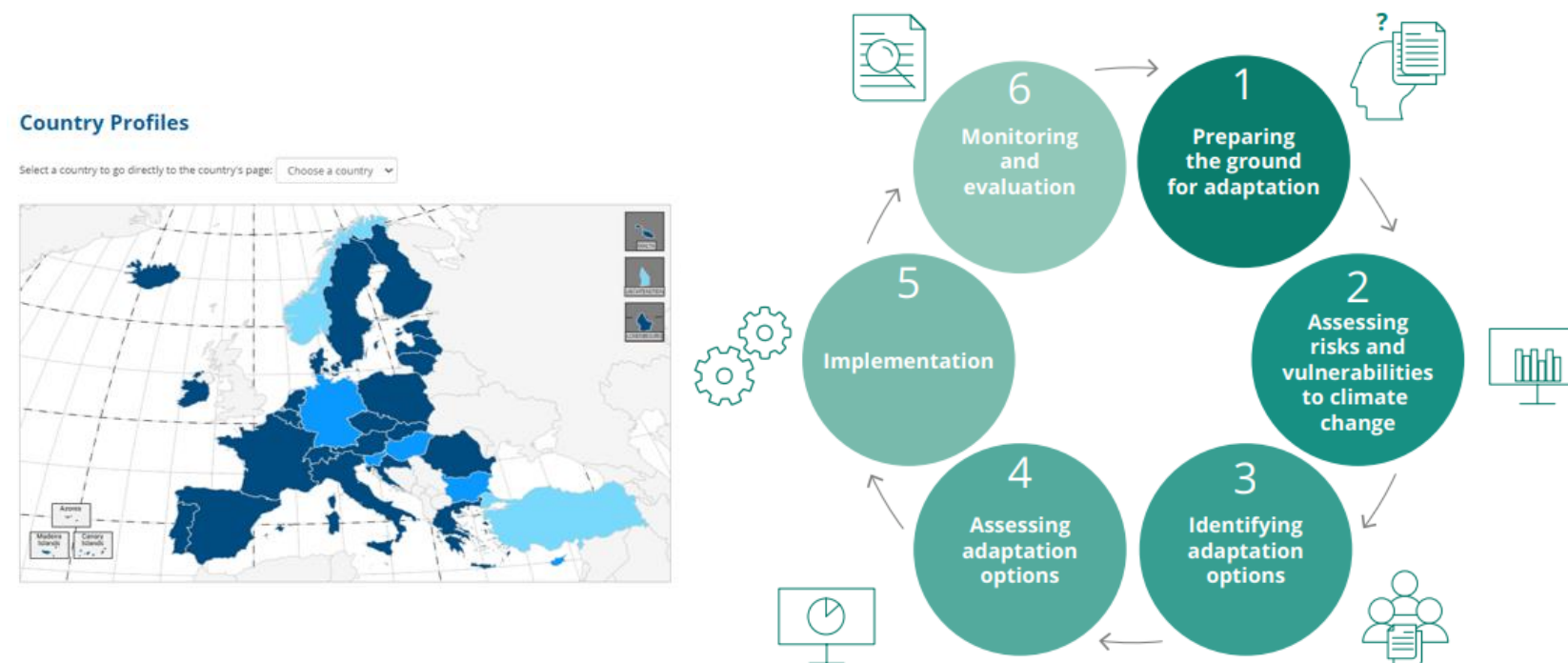


# Is Europe on track towards climate resilience?

## Status of reported national adaptation actions in 2023

## The adaptation policy landscape in Europe

\*reported under the Governance Regulation in 2023

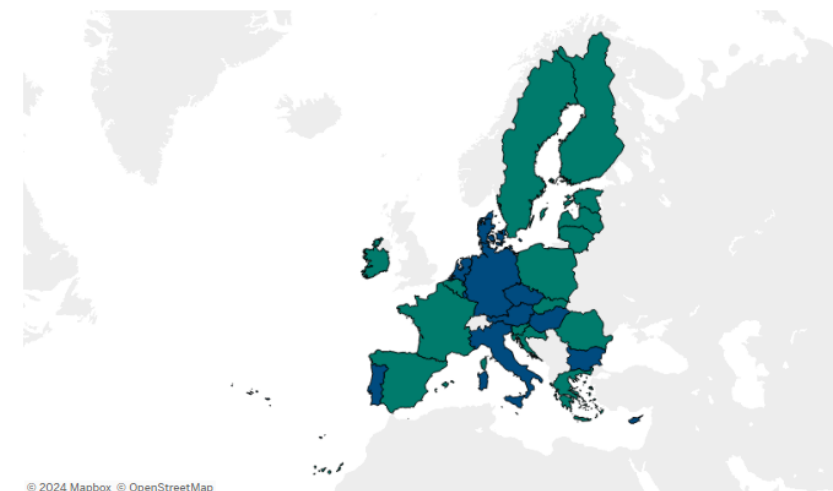


### Country Overview

The map below illustrates information reported by EU Member States on the inclusion of adaptation goals in the current integrated national energy and climate plans. Country specific information can be displayed by selecting one or more countries from the tab below, or by selecting a country from the map.

AT BE BG CY CZ DE DK EE EL ES FI FR GR HU IE IT LT LU LV MT NL PL PT RO SE SI SK EU27

■ Yes - Adaptation goal included in the current NECP ■ No - Adaptation goals not included in the current NECP



[Country Profiles](#)

[Decarbonization - Adaptation dashboard](#)

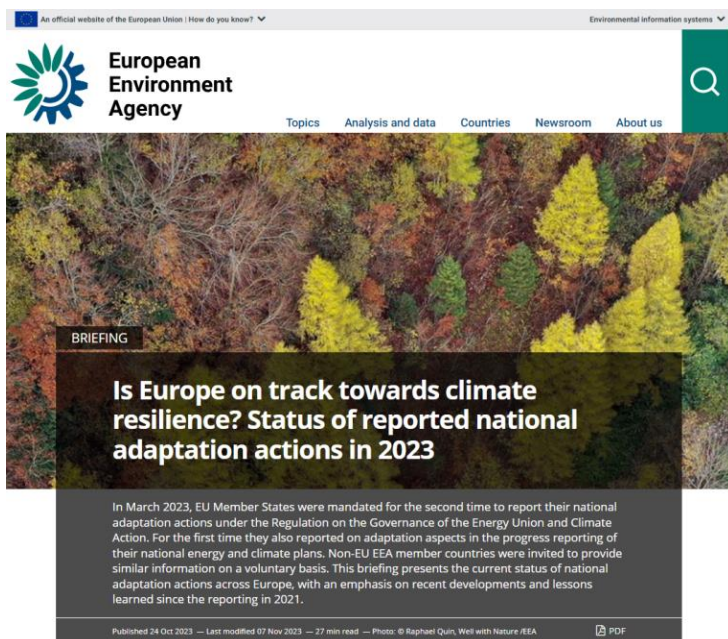
# Is Europe on track towards climate resilience? Status of reported national adaptation actions in 2023

## Climate risk assessments

Table 1: National and sub-national climate risk assessments in EEA member countries

Country	Year	Assessment product (title or reported description, in English)
Austria	2022	APCC <sup>a</sup> Special Report: Structures for climate-friendly living
Belgium	2022	Flanders: Cost-benefit analysis of climate adaptation
	2021-2023	Flanders: Climate impact, vulnerability and risk data on sub-national climate portal (regular content enhancement)
Croatia	2022	National multi-sectoral climate risk assessment
Finland	2023 <sup>b</sup>	Cross-sectorial and sectorial climate risk and vulnerability assessment
	2023 <sup>b</sup>	Assessment of climate-related regional characteristics and vulnerabilities
	2021-2023	Vulnerability assessments as part of sector adaptation plans
France	2023	ONERC <sup>c</sup> annual report to the Prime Minister and the Parliament: Heat waves in the context of climate change
	2022	ONERC <sup>c</sup> annual report to the Prime Minister and the Parliament: Foresight at the service of adaptation to climate change
	2021	Regionalised climate projections for overseas territories (Guadeloupe, Martinique, Saint-Martin, Saint-Barthélemy, Reunion)
Germany	2020	Assessment of risks associated with climate change: damage potentials and economic impacts of climate change and adaptation measures (incl. new methodology for modelling of damage potentials)
Greece	2022	Baseline analysis for climate adaptation of the biodiversity and ecosystems sector (LIFE-IP AdaptInGR)
	2021-2023	National GIS Maps Portal on Climate Change (content enhancement based on climate projection data produced by LIFE-IP AdaptInGR)
Hungary	2021-2023	Further development of the National Adaptation Geo-Information System (NAGIS) (regular content enhancement)
	2021-2023	Scientific assessments on socio-economic aspects of climate change (expected impacts of climate change on human health of vulnerable population groups, domestic migration processes, internal labour market processes)
	2021-2023	Scientific assessments of sector-related and thematic vulnerability issues (agriculture, urban flooding, housing stock, climate change effects on geological hazards)
	2021-2023	New methodology for complex vulnerability assessments of tourism products

Iceland	2018	Climate change and its effects on Iceland. Report of the Scientific Committee on Climate Change.
	2020	Methods for Coastal Flood Risk Assessment: An overview of methods used in Scandinavia and the UK and a discussion of their suitability for Iceland
Ireland	2021	Status of Ireland's climate (2 <sup>nd</sup> edition)
	2020	High-resolution climate projections for Ireland: a multi-model ensemble approach. EPA Research Report.
Italy	2021	Risk analysis: climate change in six Italian cities (update of climate risk analysis contained in the NAS)
	2022	Climate indicators in Italy in 2021
Poland	2021-2023	Assessment of climate change-related risk for municipalities (in the frame of the KLIMADA 2.0 project), including methodology for spatial assessment of changes in risk levels at municipal scale
		KLIMADA 2.0 web portal (regular content enhancement)
	2022	Natural and climatic indicators for sustainable urban development: Manual and technical guidance for cities
Sweden	2021	Evaluation of the climate adaptation work by sectoral and regional authorities (including obligatory updates of their climate and vulnerability analyses)



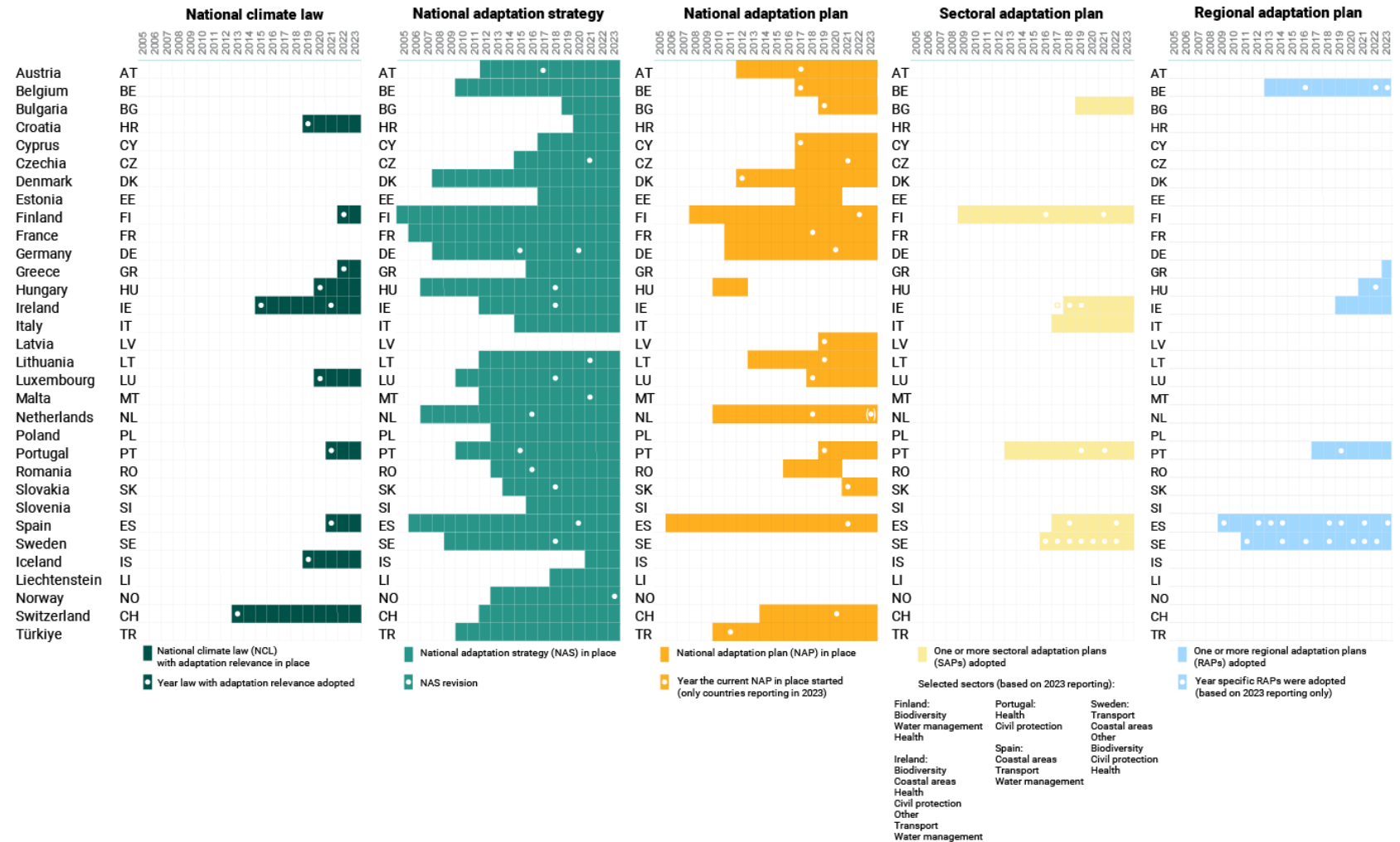
[2023 EEA briefing](#)

[2023 ETC-CA Technical Paper 2/23](#)

[2022 EEA report 11/2022](#)

# Is Europe on track towards climate resilience? Status of reported national adaptation actions in 2023

## Adaptation policies



[2023 EEA briefing](#)

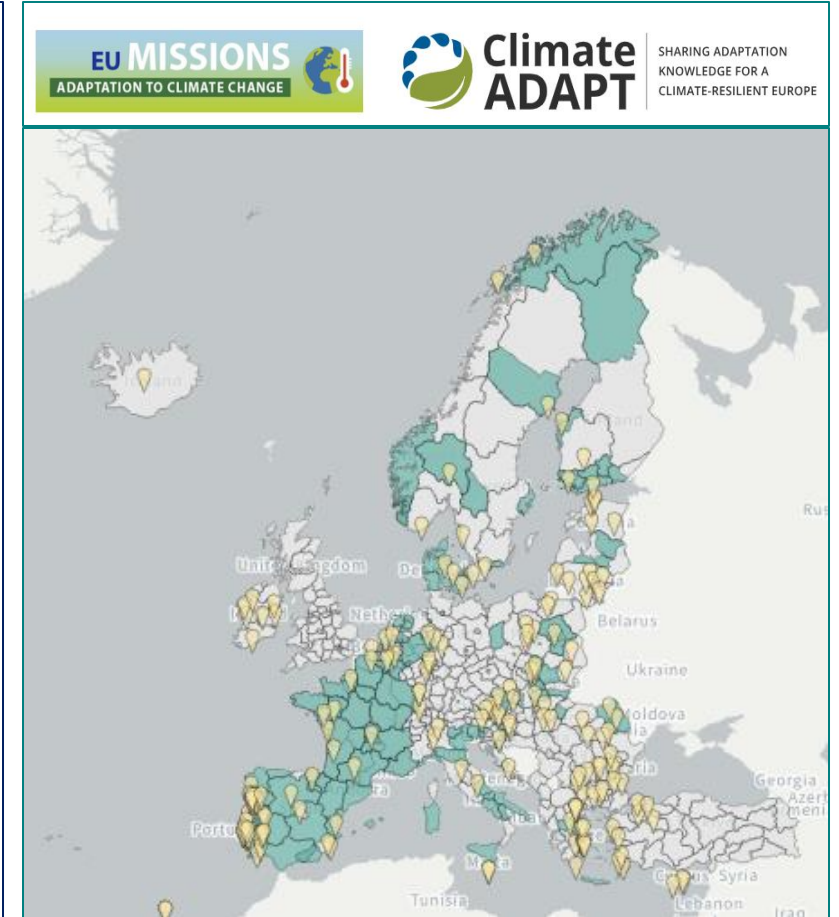
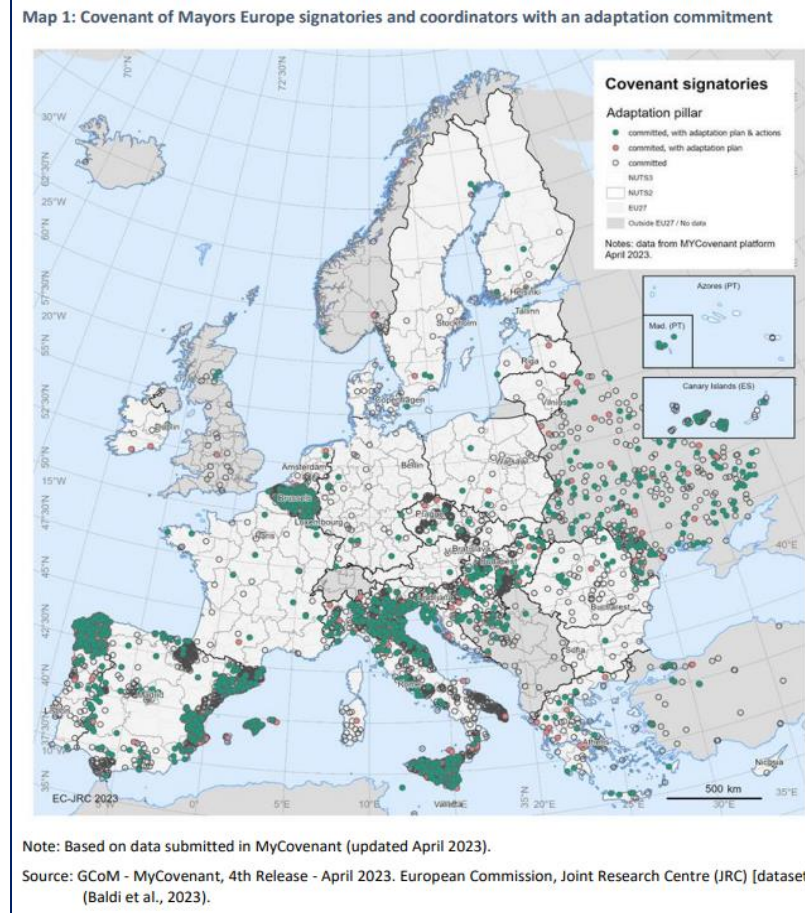
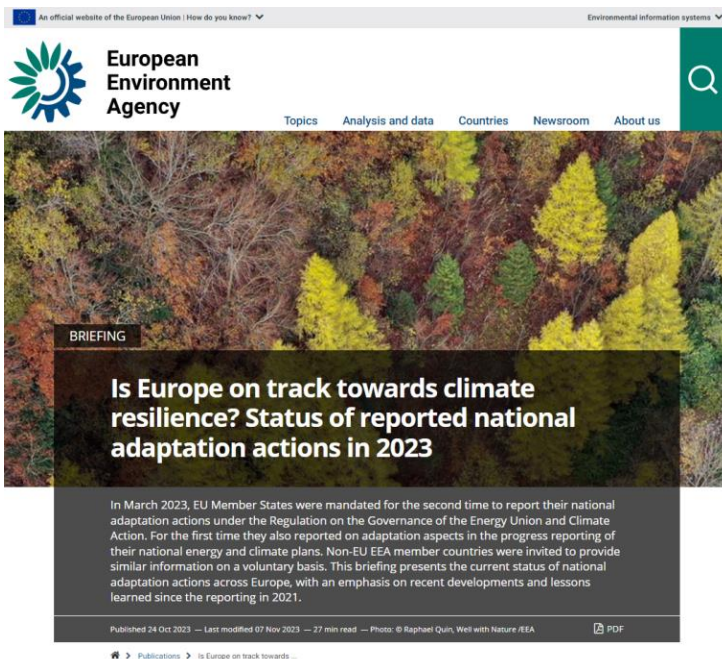
[2023 ETC-CA Technical Paper 2/23](#)

[2022 EEA report 11/2022](#)



# Is Europe on track towards climate resilience? Status of reported national adaptation actions in 2023

## Regional and local adaptation action



[2023 EEA briefing](#)

[2023 ETC-CA Technical Paper 2/23](#)

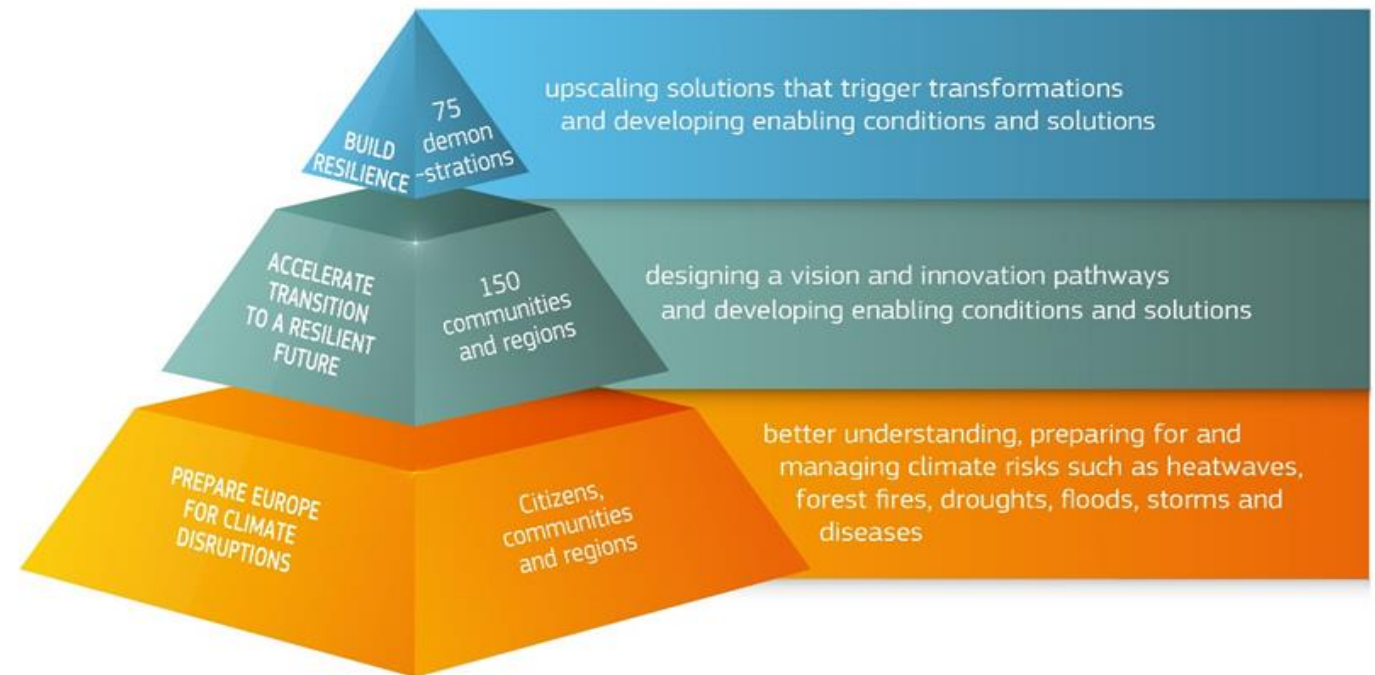
[EEA - Mission on Adaptation - Dashboard](#)

# The EU Mission on Adaptation to Climate Change:

**Support at least 150 regions, local authorities and communities towards climate resilience by 2030**

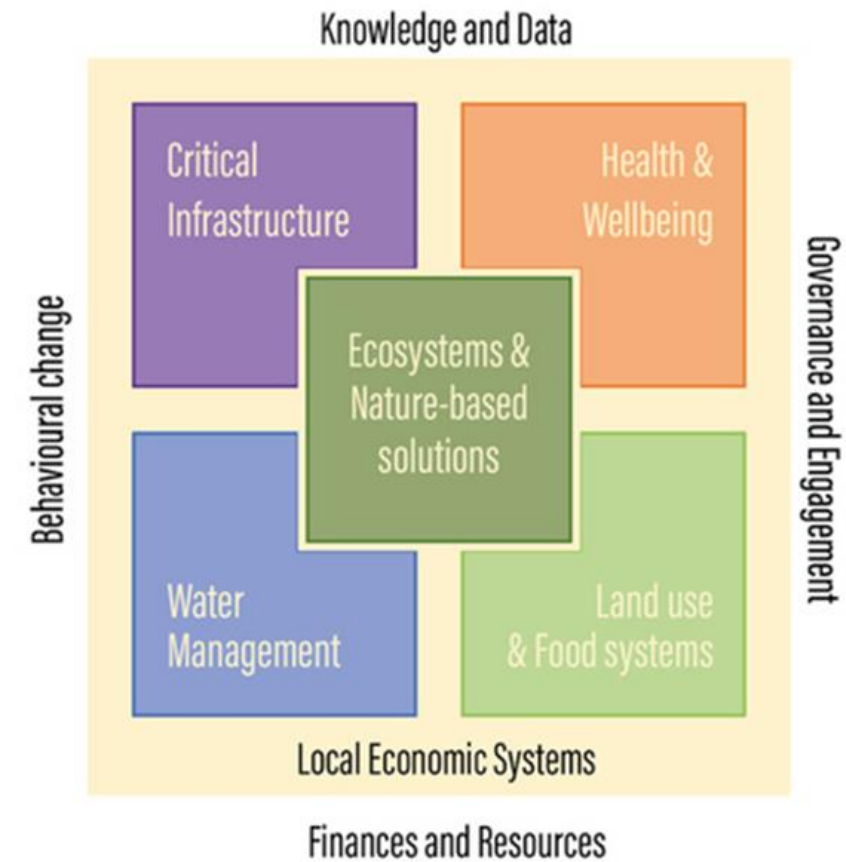
by:

- better understanding present and future climate risks;
- developing their pathways to cope with the changing climate;
- testing and deploying on the ground the needed solutions to build resilience.



## The Approach is based on Nature-based Solutions:

- Demonstrating **innovative solutions** to transform the **key systems** into more climate resilient:
  - putting ecosystems and nature-based solutions at the centre;
  - at scale and in real life,
  - in line with the national / regional adaptation plans,
  - ensuring citizens and stakeholder engagement,
  - assuring sustainable solutions after the end of the project.
- Collecting best available knowledge and experimenting on **enabling conditions**, e.g.:
  - user driven application for end users focusing on climate impact, data and knowledge;
  - unlocking of financial resources for investments into climate resilience;
  - best practices available and piloting of insurance solutions for climate adaptation;
  - Transformation of regional economic systems for climate resilience and sustainability.





## The Mission Charter and the Mission Community of Practice:

### 311 CHARTER SIGNATORIES

- 294 EU regions and local authorities, from 25 EU Member States
- 17 regions and local authorities from countries associated to Horizon Europe, the EU's research and innovation programme (2021-2027)



Large regions



Cities



Provinces



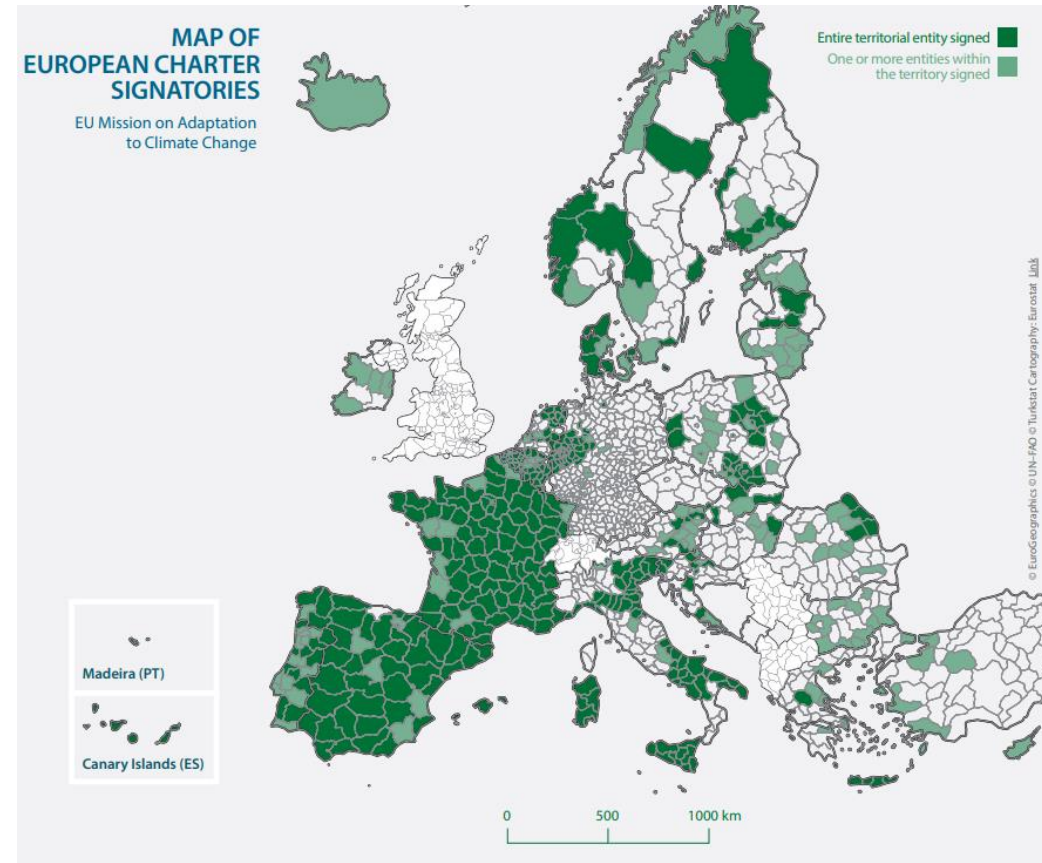
Municipalities



Capitals

### FRIENDS OF THE MISSION

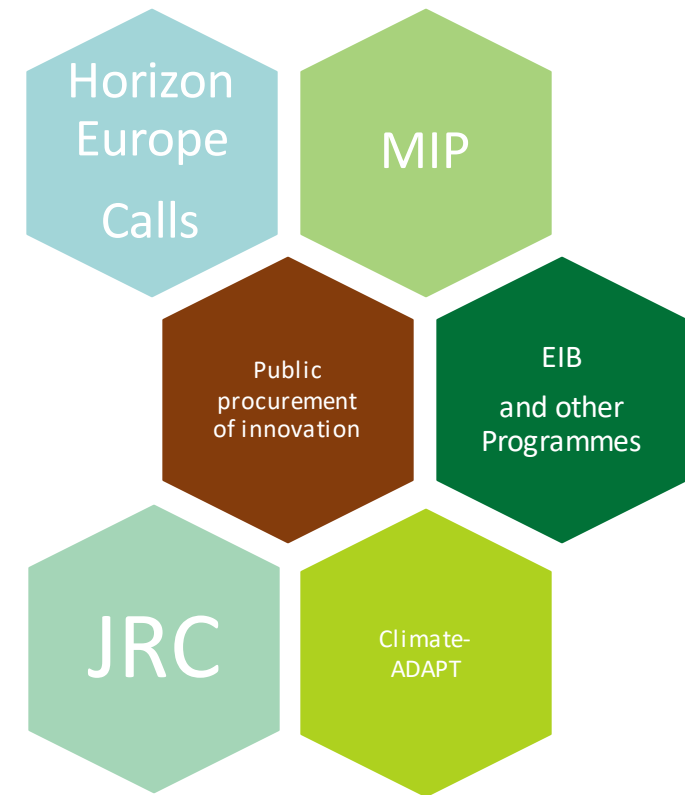
- 63 private companies, service centres, research networks, and local action groups endorse the Charter and become friends of the Mission





## How the Mission supports the regions and the local authorities?

1. Horizon Europe project grants: 20+ projects, involving 100 regions currently in the portfolio
2. Services by Mission Implementation Platform (MIP), including Technical Assistance in local languages
3. Scientific guidance and support by the Joint Research Center (JRC)
4. Access to climate adaptation knowledge from Climate-ADAPT by EEA
5. Facilitate access to EIB Climate Adaptation Investment Advisory Platform (ADAPT)







**Addressing the needs of  
cities and regions through  
the Local Green Deals**

**Vasileios Latinos, Head of  
Resilience and Climate  
Adaptation, ICLEI Europe  
Climate Chance 2024,**

**WS13 How can local levels  
be integrated into national  
adaptation policies in  
Europe?**

**8 February 2024,  
Liege/Belgium**



## INTRODUCING ICLEI

- ICLEI - Local Governments for Sustainability is a global network of more than **1,750 local and regional governments** committed to **sustainable urban development**.
- Active in 100+ countries, we influence sustainability policy and drive local action for low emission, nature-based, equitable, resilient and circular development.

**1750+** LOCAL  
AND REGIONAL  
GOVERNMENTS

**22** OFFICES  
WORLDWIDE

**ACTIVE IN**  
**100+** COUNTRIES

IMPACTING MORE THAN  
**25% OF THE**  
GLOBAL URBAN POPULATION

AND MORE THAN  
**20% OF THE**  
GLOBAL URBAN POPULATION

**5** INTERCONNECTED  
DEVELOPMENT  
PATHWAYS

## The Five ICLEI Pathways



LOW EMISSION  
DEVELOPMENT



NATURE-BASED  
DEVELOPMENT



EQUITABLE AND  
PEOPLE CENTERED  
DEVELOPMENT



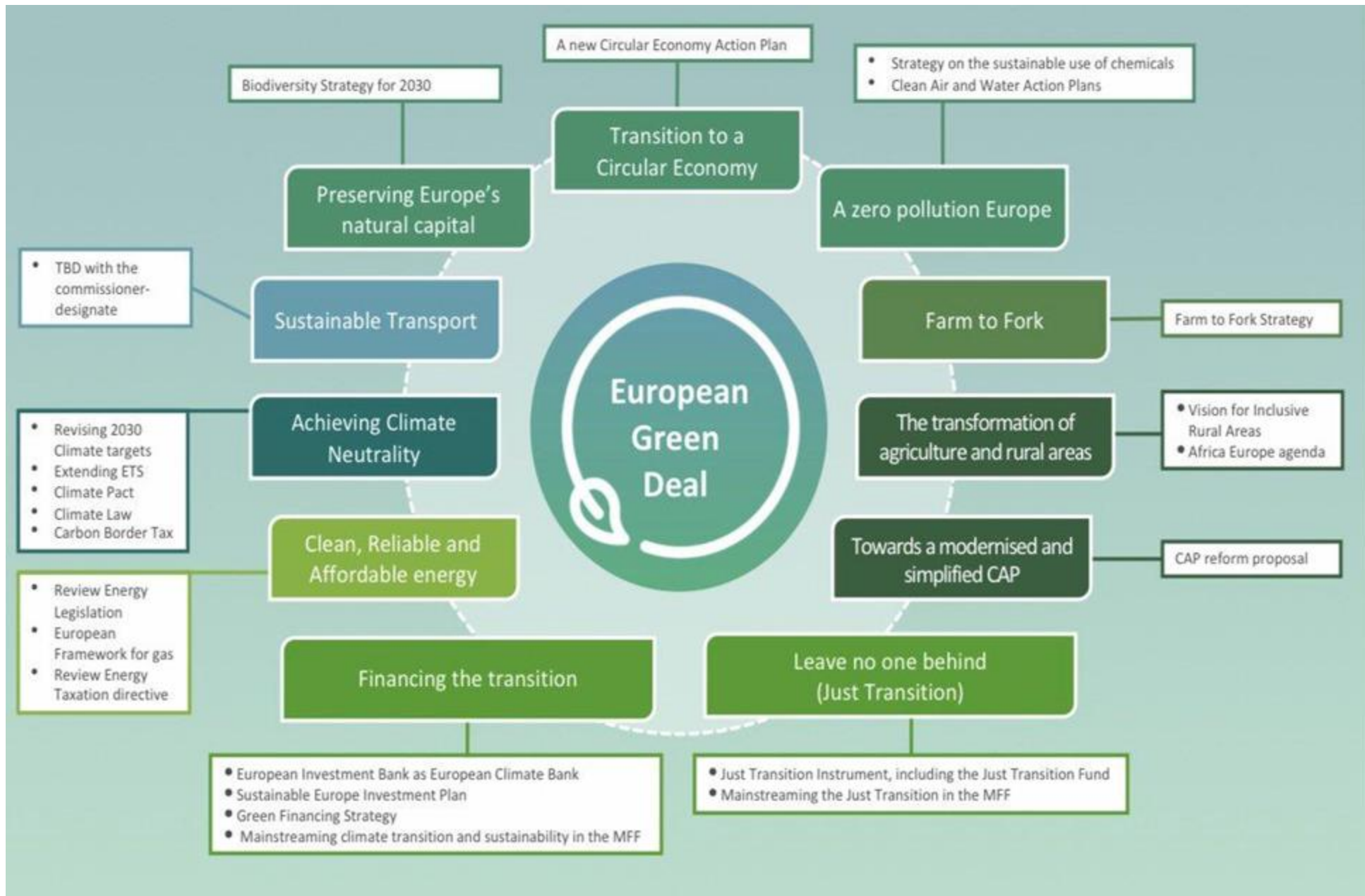
RESILIENT  
DEVELOPMENT



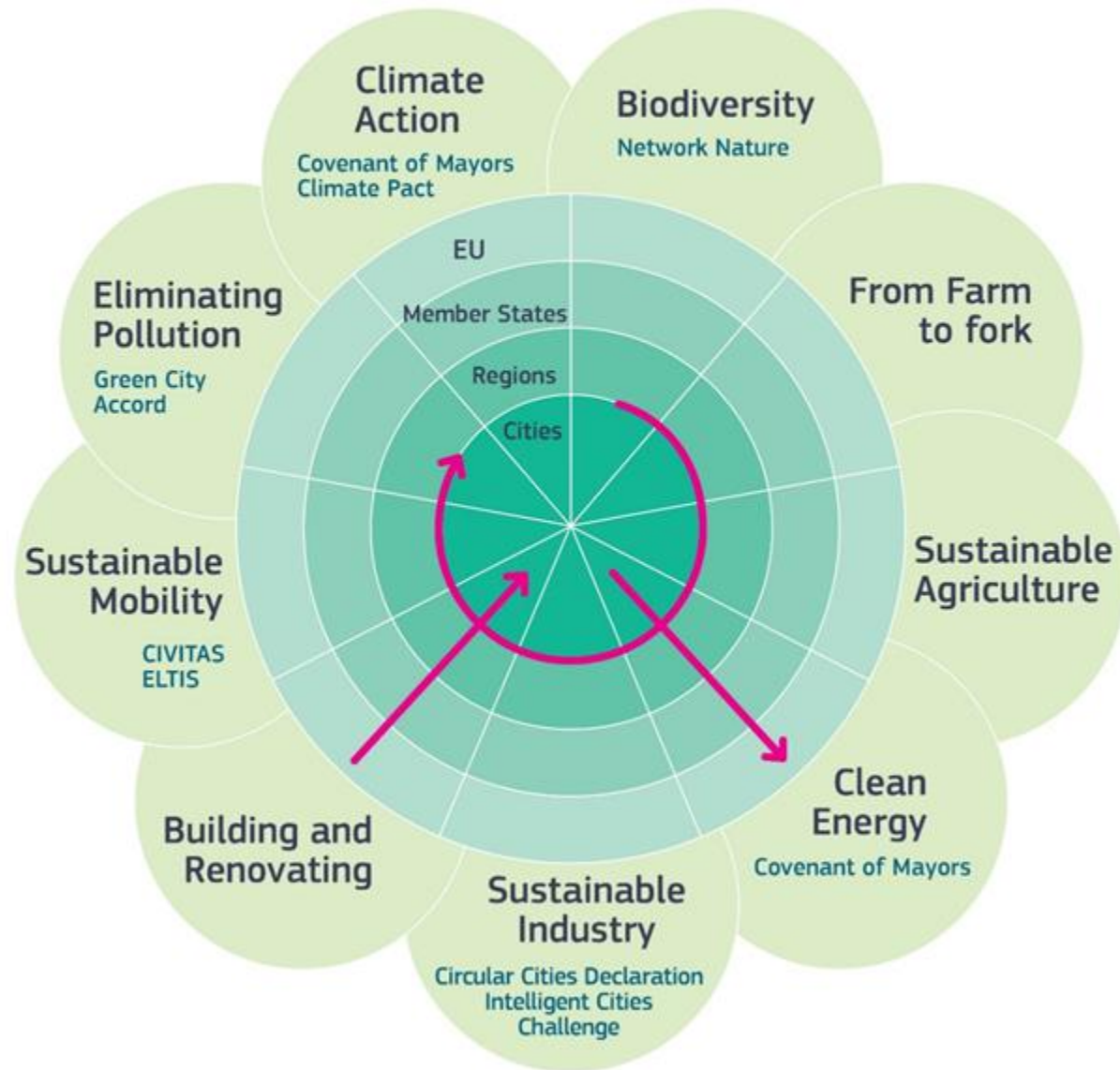
CIRCULAR  
DEVELOPMENT

The **FIVE ICLEI PATHWAYS** reflect ICLEI's approach to achieving a sustainable city as well as local contributions to implementing the goals laid out in international frameworks such as the Sustainable Development Goals. Any of our individual projects or initiatives can be oriented along one or more specific pathways. We also look at how the pathways connect to bring about change in an **INTEGRATED** way. For example, we consider how nature-based development contributes to resilience, or how to bring equity into low emission development.





# Key topics of the EU Green Deal



# Local Green Deals



## Local Green Deals and the Cities Mission

- Implementation of the EGD on the local level as overarching strategy for ICLEI Europe
- A governance and implementation approach to accelerate and scale-up a city's sustainable transformation
- The ICLEI European Secretariat is also engaging in the EU Mission for Climate Neutral and Smart Cities and the implementation of Climate City Contracts (CCC).
- The CCC is a multi-level government collaboration tool and instrument for building resources to outline a city's climate neutrality transition. The CCC is both an ongoing process and a 'living' document. The CCC process aims to co-create new ways of working together with local, regional, and national stakeholders to reach climate neutrality in the city by 2030.