

Présidence belge du Conseil de l'Union européenne

Sommet Climate Chance Europe 2024 Wallonie

v

6

Redonner de la place à l'eau

Giving water its rightful place back



Adaptation au changement climatique, solutions basées sur la nature et résilience



08 & 09 février 2024 - Liège – Palais des Congrès

Modérateur – *Moderator*



Sébastien Dujardin

Université de Namur

Intervenants – Speakers



Chris Baker

Wetlands International Europe



Jacques Teller

Université de Liège



Marc Thirion

SPW ARNE



Claudia Niessen

Bourgmestre, Eupen



Violeta Jelić

Secretary General, Croatian
Chamber of Trades and Crafts
(HOK) and Member of EESC

Wetlands International Europe

Association of NGOs: *13 members in 9 European countries - 10+ years of existence*

Network office of Wetlands International global organisation



Belgium



France



Spain (2)



Italy



Greece

EURONATUR



Succow
Stiftung

Germany (2)



Poland



Lithuania

ZSL | LET'S WORK
FOR WILDLIFE



Sustainable
Eel Group



WWT Wetlands for life

UK (3)

Lost Sponge Capacity – and resilience



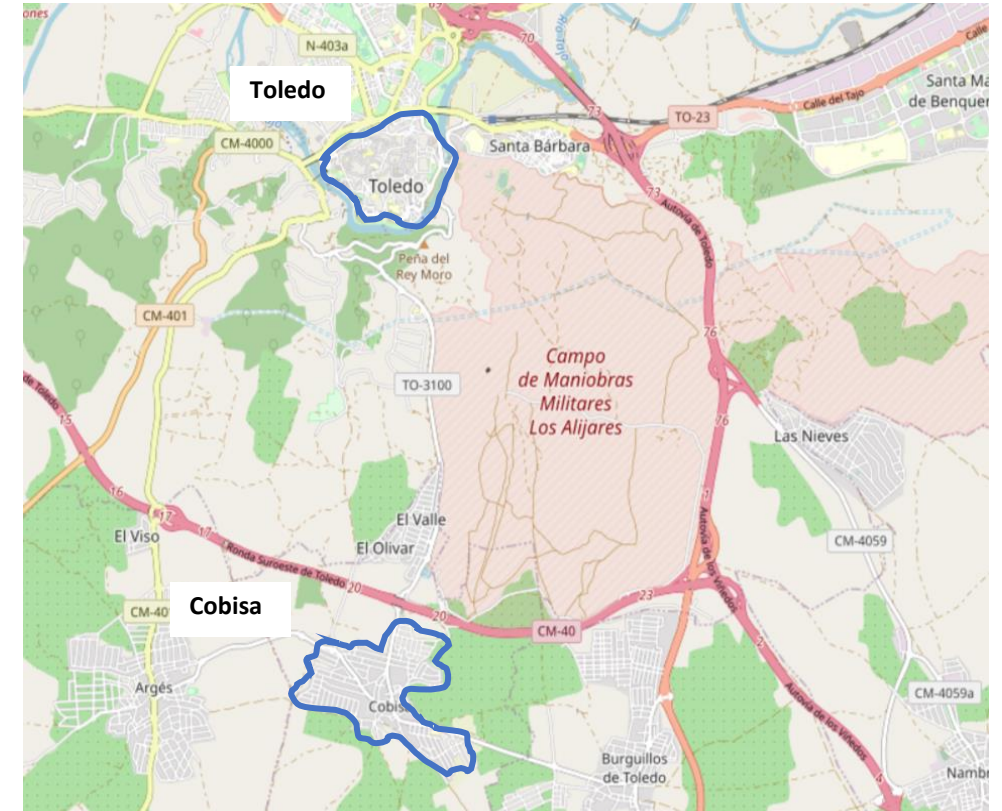
- **35% of Europe's wetlands lost since 1970**
- **75% of wetlands in Flanders lost in past ~60 years.**
- **70-90% of Europe's floodplain area ecologically degraded**
- **Wetlands, including mires, bogs and fens among most threatened ecosystems in Europe**

Dana flood event Spain – 3 September 2023



Damages approaching 300 million euros in Castilla-La Mancha, Toledo (UNESCO World Heritage Site)

Including Cobisa, a small village near Toledo



Source: La Tribuna de Toledo

Cobisa land use change

Stream built over – now a street with name of stream!

1956: next to the stream, riverbed respected without building, for horticultural purposes and crops

2023: stream built over



Source: Eduardo Butragueño twitter thread; Google Maps

Germany – Belgium Floods July 2021

- **Deadliest flood in decades - 10th deadliest in the past 100 years**
- **+220 people died in Germany and Belgium**
- **Most expensive natural disaster in Germany estimated at €35 billion**
- **Worst devastation upper catchments**
- **Main Rhine river “hardly affected”**



Landscape Factors July 2021 Floods

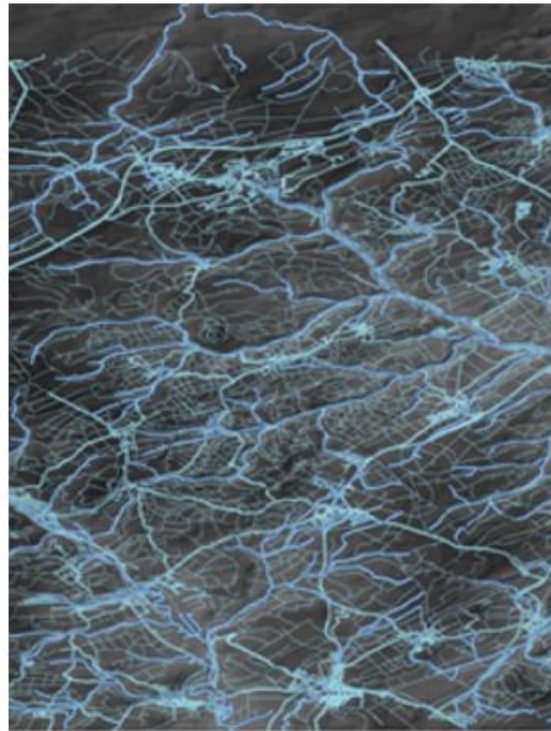
Rhine & Meuse River Upper Catchments



58% of the upstream land area contributed 89% of the peak discharge downstream



Drainage contributed disproportionately to peak floodwaters downstream



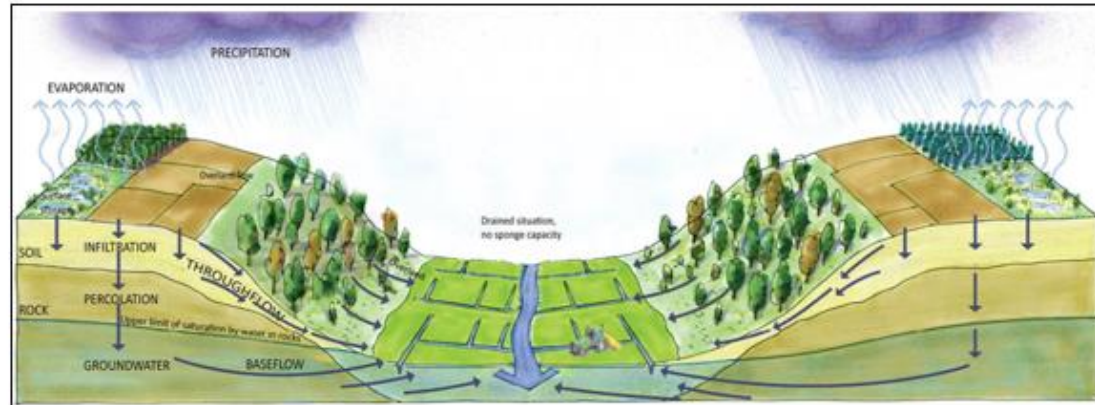
Paved surfaces were the main rivers channelling floodwaters downstream



Bare soils were a major contributor to floodwaters

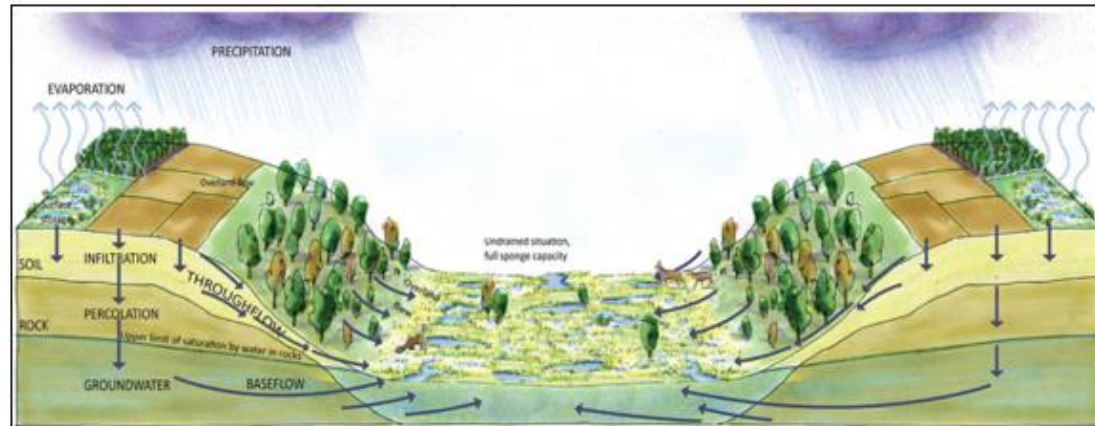
Natural Sponges for protection against floods droughts

Upper Catchments



Current

Man-made drainage,
fast water discharge



Restored

Slow infiltration
and discharge



Natural Sponges Research

Micro Catchments, Macro Effects

- **Peak flow reduction:** up to **35%** at local scale (2% international)
- **Dry periods:** 10 - 30% higher baseflow
- **Water quality:** Retention of nutrients
- **Carbon Farming:** CO2 storage
- **Biodiversity:** improves status species and habitats

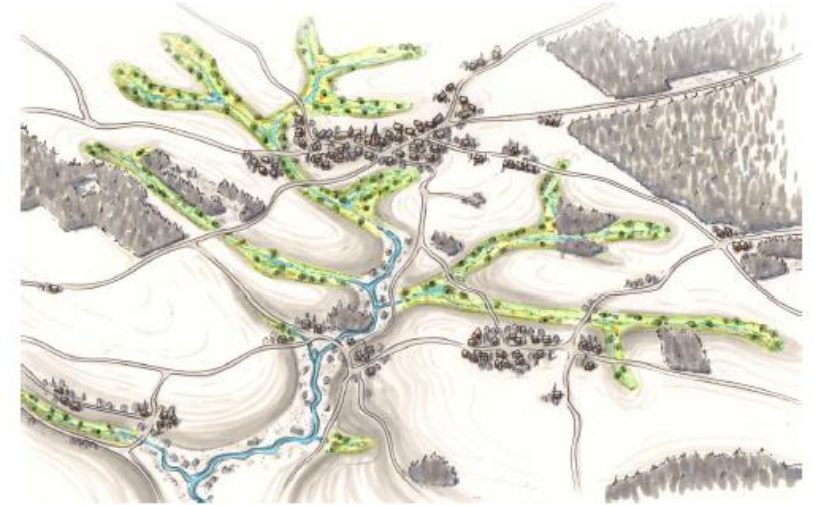
Measures could benefit 125,000 km² – when restoring 6% of upstream areas

Germany, France, Belgium and Luxembourg



Micro Catchments, Macro Effects

Natural retention in the Rhine catchment as a nature-based solution for flood risks, drought control, biodiversity restoration and climate challenges.



Horizon Europe Project Rewet

Open Lab Site Belgium – on the ground restoration



Stream Bêche

- Amblève catchment, Meuse River, watershed of 2 km²
- Drainage channels to support plantation forestry



natagora



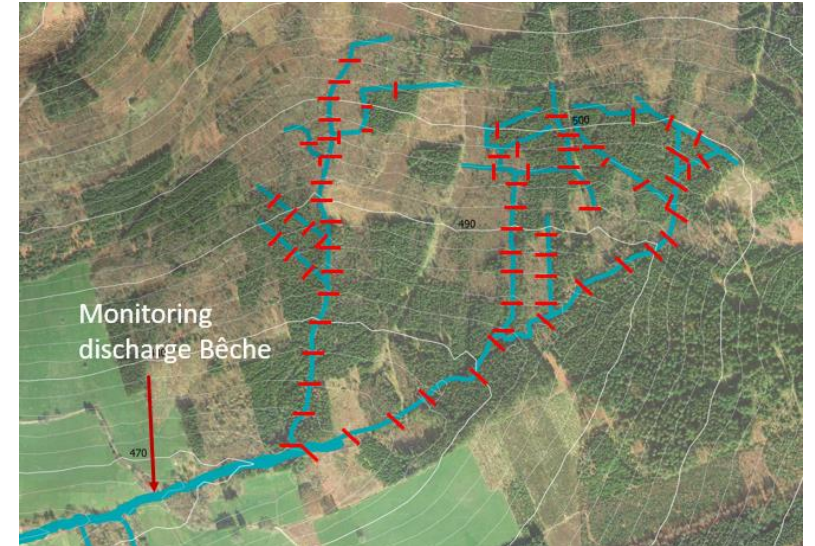
Measures

- Blocking drainage channels with wood debris and soil to slow flows & raise riverbed

Impact

- Wallonia government interest in replication

<https://www.rewet-he.eu/>



EU level action needed

Water Resilience & Adaptation to Climate Change

Collecting signatures from Associations for a Joint statement to EC on Initiative for Water Resilience

Proposed EU Water and Climate Resilience Law

- EU water reserves for catchments in stressed areas
- Sponges Financing Facility
- Water efficiency and abstraction targets covering all users

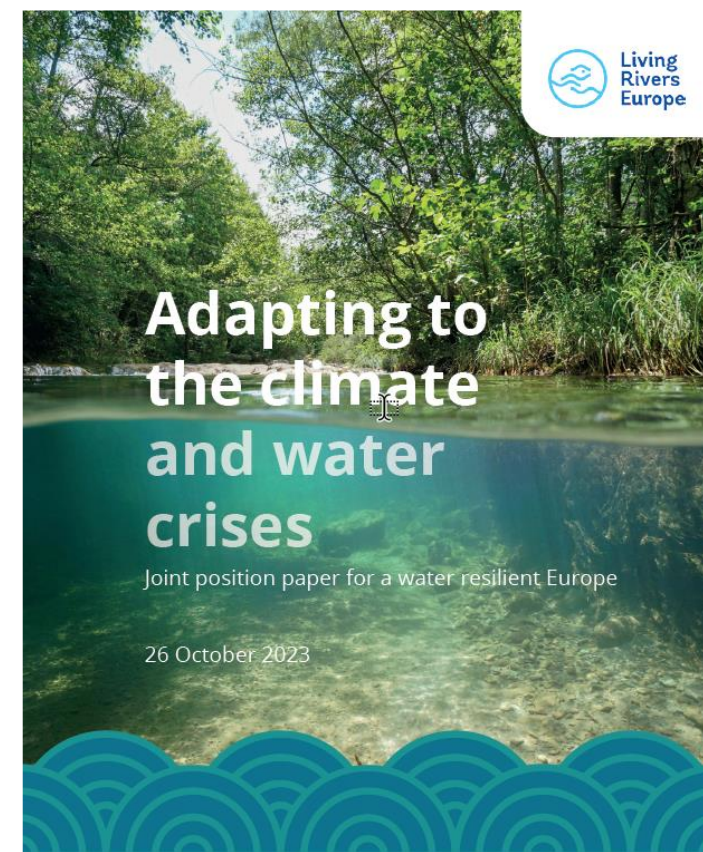
A fully implemented Green Deal

- Adoption Nature Restoration Law – national plans enhance adaptation

Climate Adaptation Proofing all new legislative & non-legislative acts

Full enforcement & implementation of Water Framework Directive

Elimination of harmful subsidies – including continued drainage of wetlands



Thank you!



Chris Baker

Director

Wetlands International Europe

Chris.Baker@wetlands.org



ATELIER 6

Redonner de la place à l'eau

DES ENJEUX SOCIÉTAUX AUX SOLUTIONS COCONSTRUITES

MARC THIRION
DIRECTEUR

SPW ARNE - DIRECTION DE L'AMÉNAGEMENT FONCIER RURAL

1. QUI ?

2. OBJECTIF RESILIENCE...COMMENT ?

3. REALISATIONS « EAU »

4. CONCLUSIONS & PERSPECTIVES

1. QUI ?

2. OBJECTIF RESILIENCE...COMMENT ?

3. REALISATIONS « EAU »

4. CONCLUSIONS & PERSPECTIVES

SPW ARNE – DAFoR

DIRECTION DE L'AMÉNAGEMENT FONCIER RURAL



60

AMÉNAGEMENT
FONCIER DES BIENS
RURAUX



MOBILISER

POLITIQUE
FONCIÈRE
AGRICOLE



CONFIER

AMÉLIORATIONS
FONCIÈRES



OPTIMISER

1. QUI ?

2. OBJECTIF RESILIENCE... COMMENT ?

3. REALISATIONS « EAU »

4. CONCLUSIONS & PERSPECTIVES



TEMPS T_0

TEMPS T

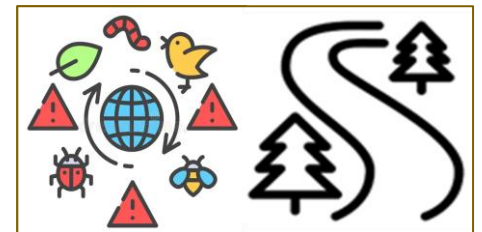
OCCUPATION



PROGRAMME

ACTE

PROPRIÉTÉ



AMÉNAGEMENT FONCIER



=



+



+



+



=



+



= >



+



MÉTIER → SUPPORT

1. QUI ?

2. OBJECTIF RESILIENCE...COMMENT ?

3. REALISATIONS « EAU »

4. CONCLUSIONS & PERSPECTIVES

RÉALISATIONS « EAU »

REMÉANDRAGE



RN

MARES



MULTIFONCTIONS

ZIT



WILLEMEAU

ZoGE



WALLONIE
PICARDE

REMÉANDRAGE DE LA MARCQ

AGRANDISSEMENT RÉSERVE NATURELLE TERNEPPE

10 → 15 HA

SPW ARNE
DÉPARTEMENT
NATURE
& FORÊTS



RÉALISATIONS « EAU »

REMÉANDRAGE



RN

MARES



MULTIFONCTIONS

ZIT



WILLEMEAU

ZoGE



WALLONIE
PICARDE

LES PAS DU GÉANT

2 MARES DE 20 ARES & PLANTATIONS

SPW ARNE
DÉPARTEMENT
NATURE
& FORÊTS



OBSERVATOIRE DE LA BIODIVERSITÉ & PARCOURS AGRINATURE



RÉALISATIONS « EAU »

REMÉANDRAGE



RN

MARES



MULTIFONCTIONS

ZIT



WILLEMEAU

ZoGE



WALLONIE
PICARDE

2 ZIT ÉCO-INTÉGRÉES DE WILLEMEAU

70.000 M³, PÂTURAGE, BIODIVERSITÉ, TOURISME...



RÉALISATIONS « EAU »

REMÉANDRAGE



RN

MARES



MULTIFONCTIONS

ZIT



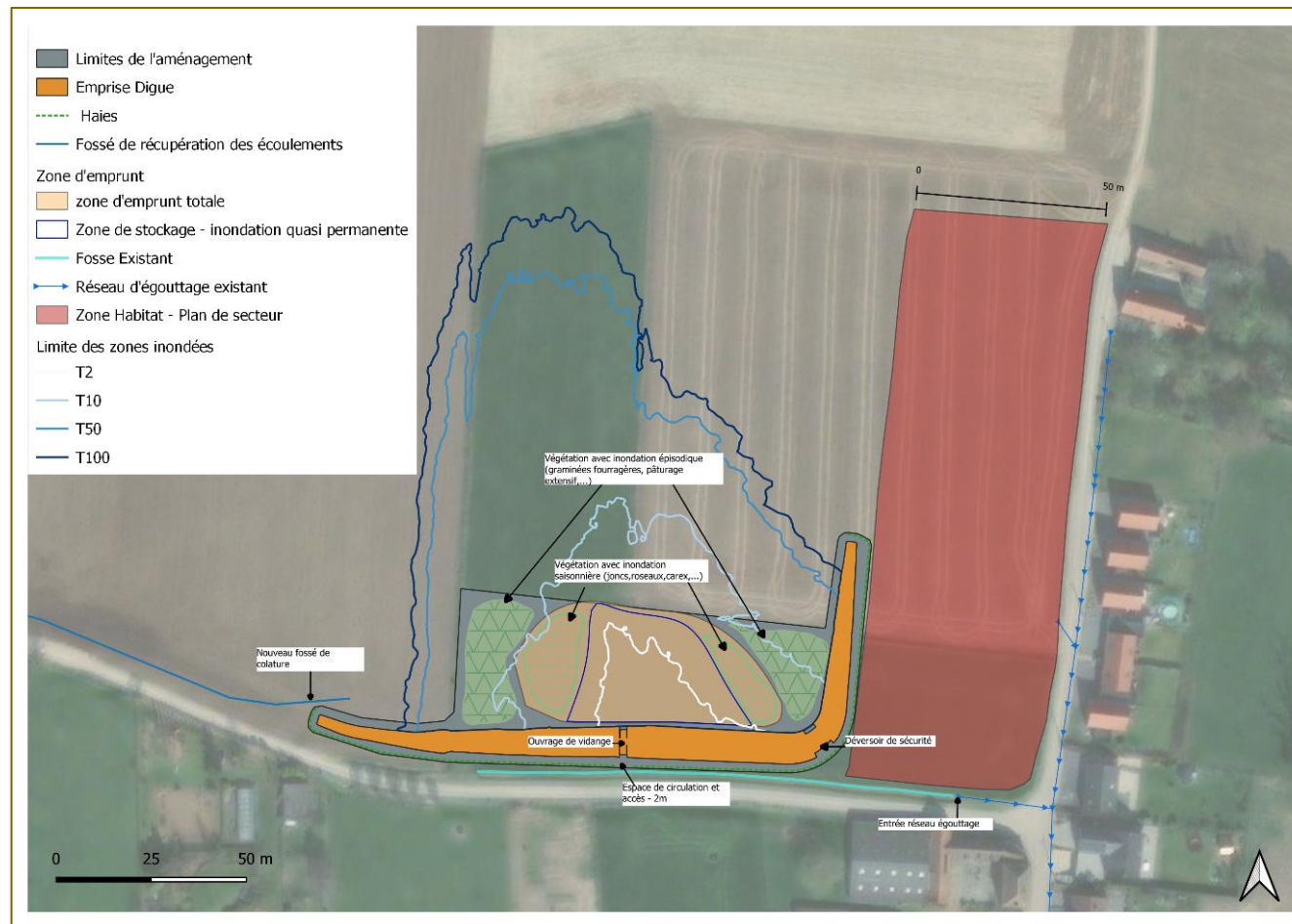
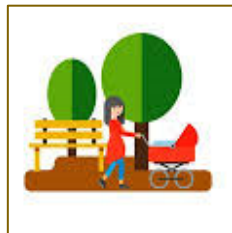
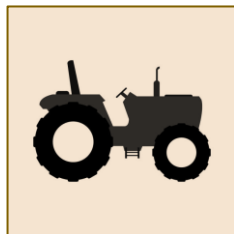
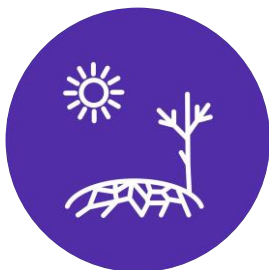
WILLEMEAU

ZoGE



WALLONIE
PICARDE

ZIT → ZONES DE GESTION DE L'EAU ÉCO-INTÉGRÉES



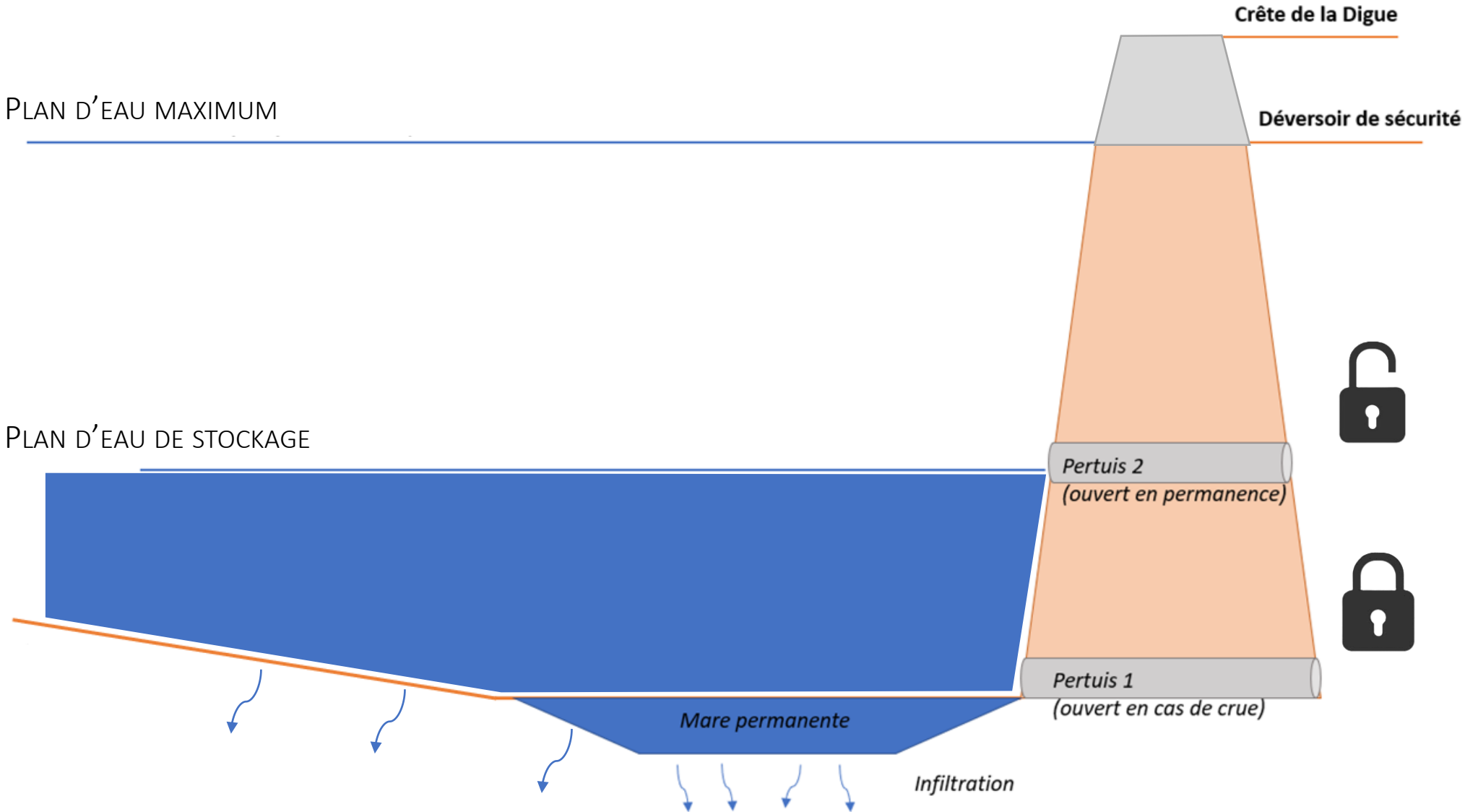
**Volume marre permanente
Volume stockage (utilisation agricole)**

Volume temporisation (pluies importantes)

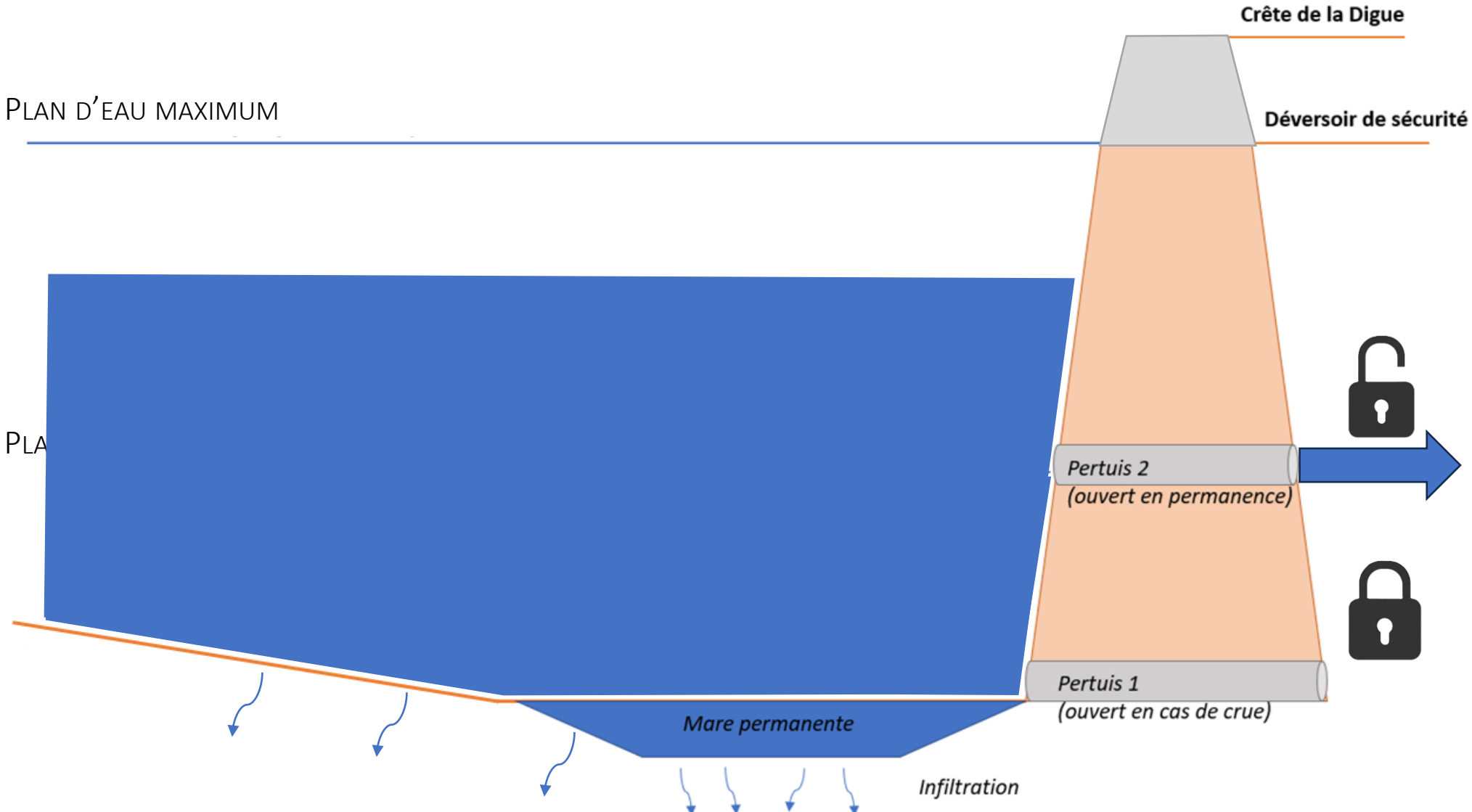
500 m³ (Q2 pluie d'hiver)

5 500 m³ (Q100 pluie d'hiver)

SCÉNARIO 1 : STOCKAGE



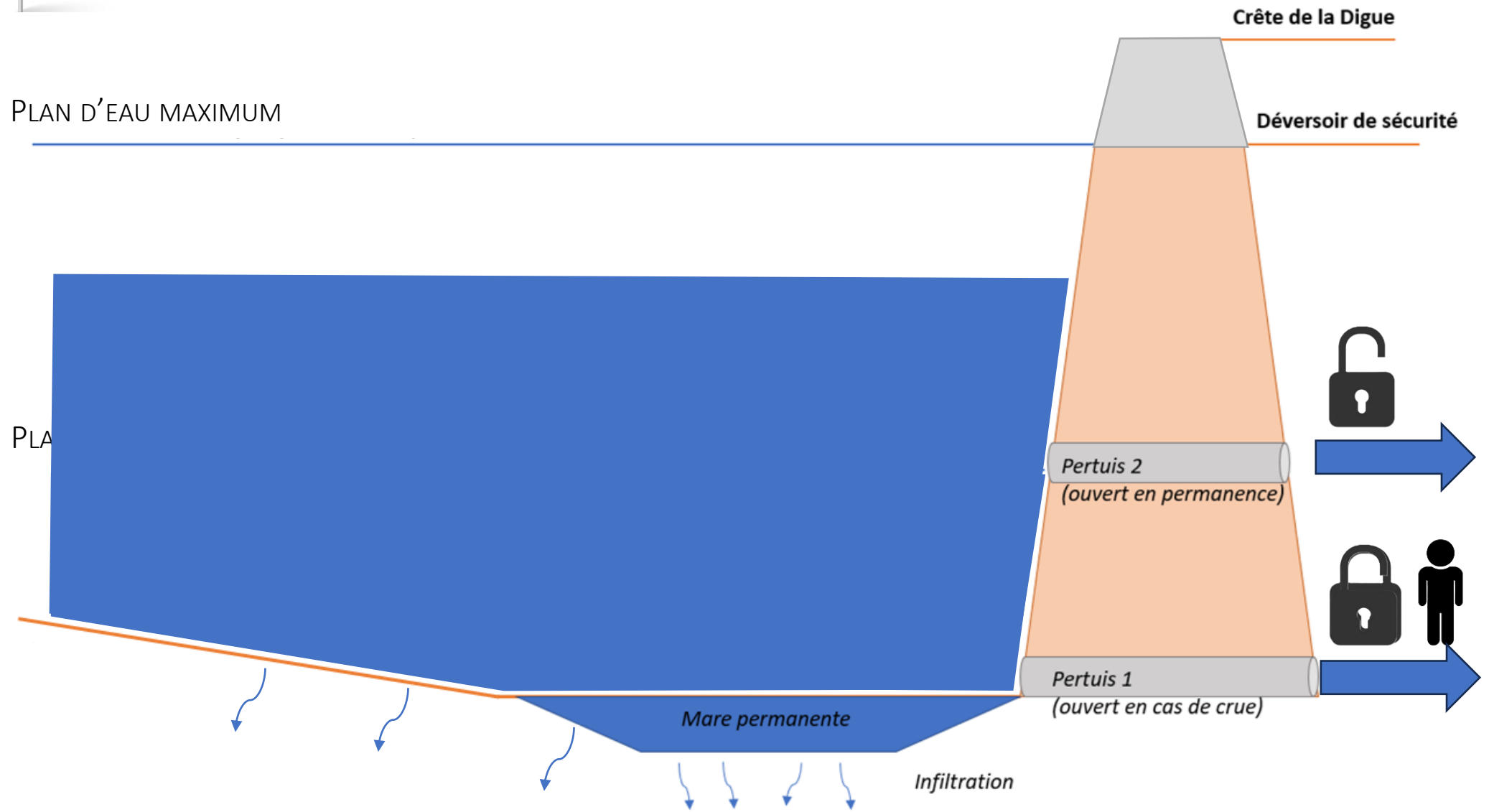
SCÉNARIO 2 : STOCKAGE & TEMPORISATION



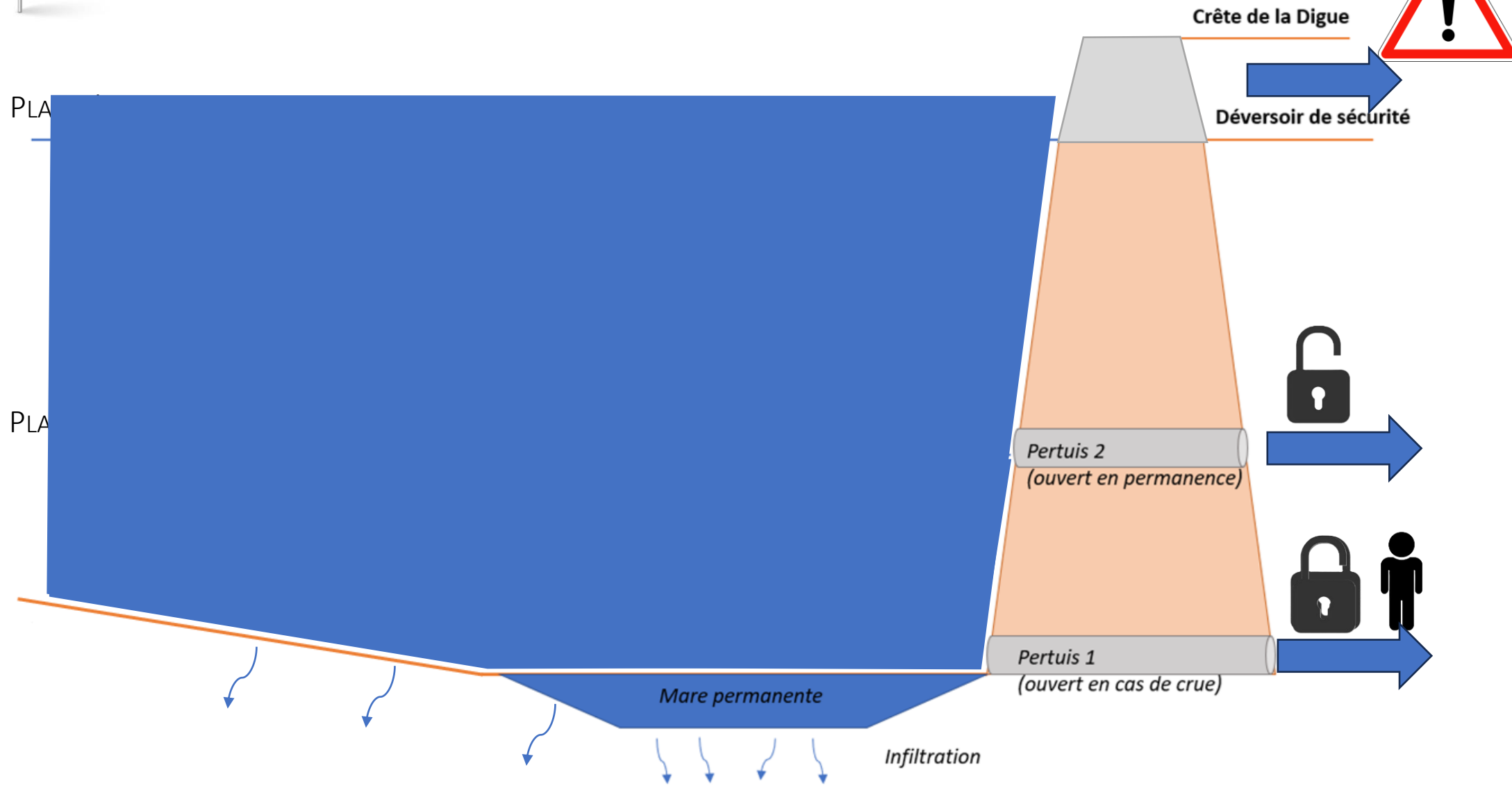
SCÉNARIO 3 : TEMPORISATION PLUIE IMPORTANTE



PLAN D'EAU MAXIMUM



SCÉNARIO 4 : TEMPORISATION PLUIE EXTRÊME



1. QUI ?

2. OBJECTIF RESILIENCE...COMMENT ?

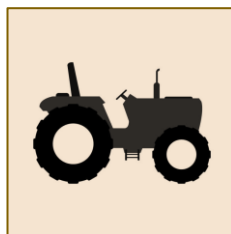
3. REALISATIONS « EAU »

4. CONCLUSIONS & PERSPECTIVES

AMÉNAGEMENT FONCIER



ADAPTER L'OUTIL EN FCT DES ENJEUX SOCIÉTAUX



—————→
PÉRIMÈTRE MAX. 1500 HA & PROCÉDURE MIN. 6 ANS & ~~PRATIQUES AGRICOLES~~

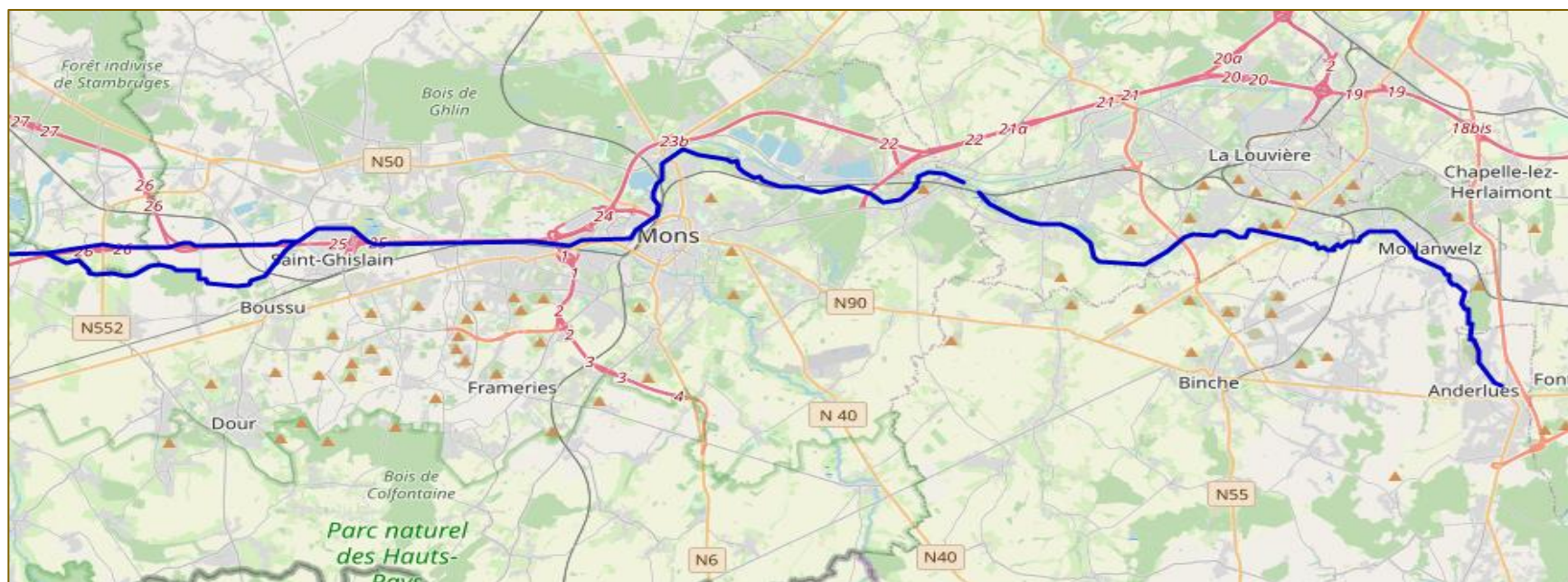
AMÉNAGEMENT FONCIER



TRAVAILLER EN SYNERGIE AVEC D'AUTRES OUTILS



RENATURATION DE LA HAINE



HAINAUT + 72 KM + B.V. DE 800 KM² + POLLUTIONS

PARTENAIRES

PUBLICS :

DNF
DCENN
SPW MI
CR HAINE
COMMUNES
INTERCOM-
MUNALES
PROVINCE
UNIVERSITÉS
HIT...

PARTENAIRES
PRIVES

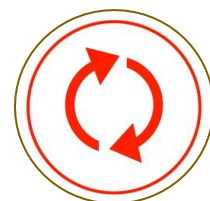
RENATURATION DE LA HAINE

ETAPE 1 : DÉFINITION DES PÉRIMÈTRES

PROGRAMME



ETAPE 2 : FONCIER



ETAPE 3 : TRAVAUX



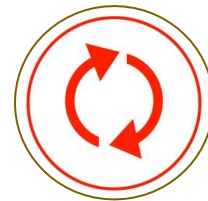
RENATURATION DE LA HAINE

ETAPE 1 : DÉFINITION DES PÉRIMÈTRES

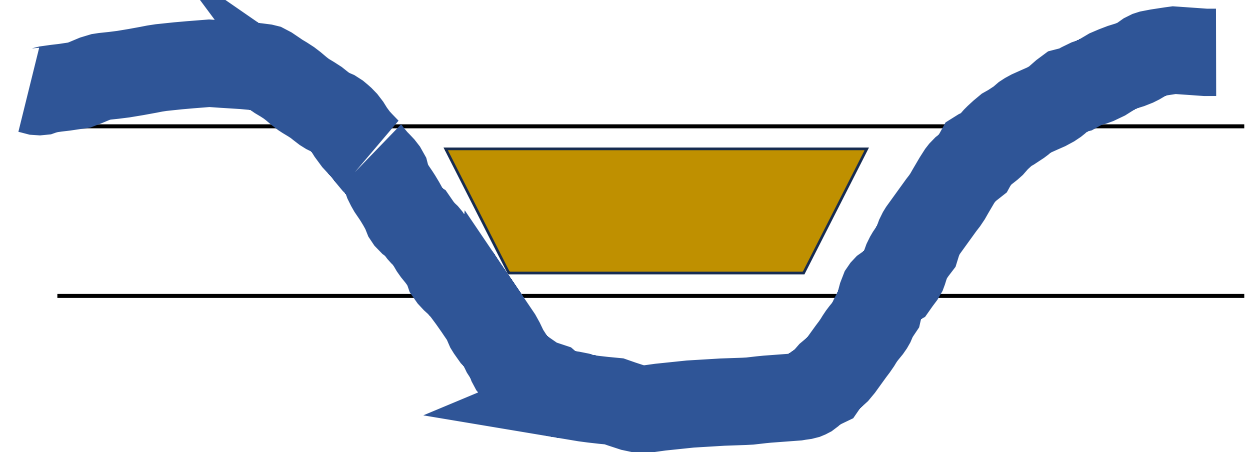
PROGRAMME



ETAPE 2 : FONCIER



ETAPE 3 : TRAVAUX





Multifonctionnalité
Services
Biodiversité
climatique
écologique
Résilience
Changement
Emprunte
écosystémiques

MERCI POUR VOTRE ATTENTION



Claudia Niessen

Bourgmistre d'Eupen



20.082 habitants

103,7 km²



Le changement climatique nous est tombé dessus.

Ce sont les crises qui nous montrent une fois de plus que nous ne pouvons pas continuer comme avant.

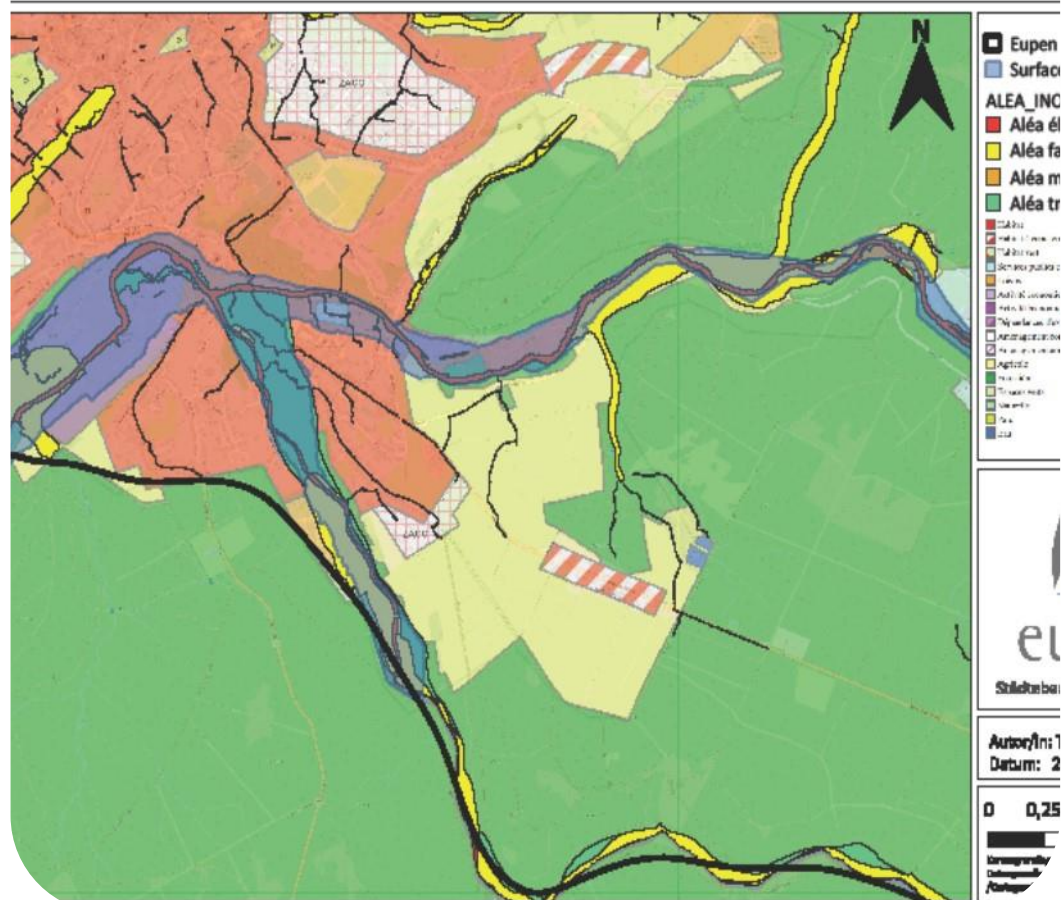
14 juillet 2021





Bilan

- 500+ ménages touchés
- 12.000 m3 de déchets en l'espace de 2 semaines
- 1,62 millions d'euros attribués sous forme de dons
- 250 personnes accompagnées dans la recherche d'un logement



Infrastructures publiques

- 12 bâtiments communaux (hall de sport, piscine, maison du quartier ...)
- 20 tronçons de rue et 8 ponts
- 3 parcs et 9 fontaines
- 26 tronçons de canalisation
- équipements (éclairages ...)



Comment reconstruire rapide et/ou durable ?

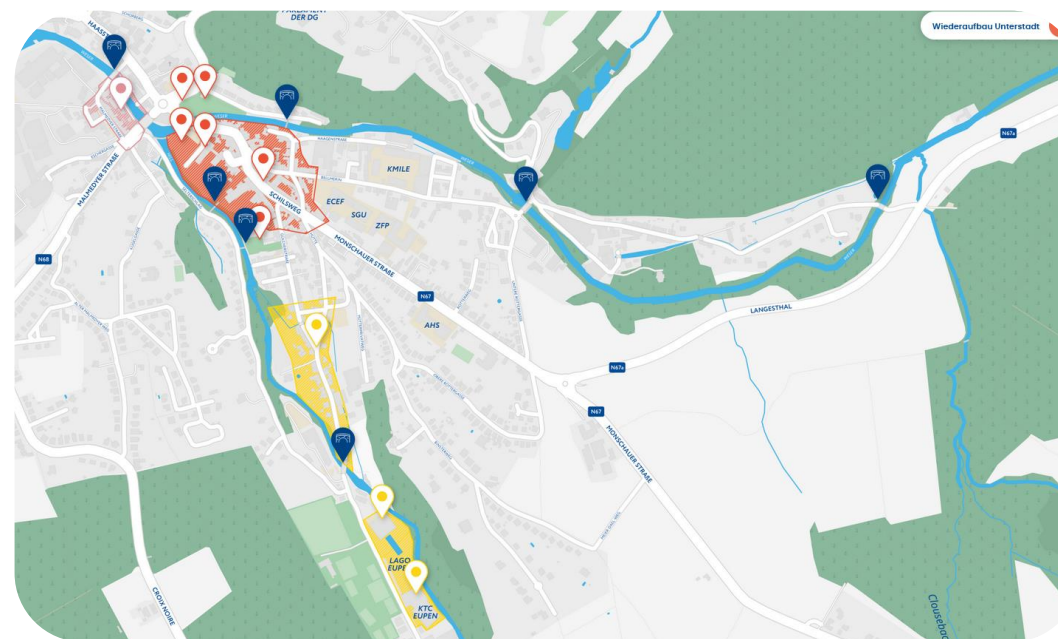
- distinguer le secteur privé du secteur public
- mesures provisoires
- mesures à court terme lors de la reconstruction
- réflexions stratégiques à long terme

Reconstruction de la ville basse à Eupen



Wiederaufbau
**UNTER
STADT**

Meine Heimat.
Deine Chance.
Unsere Zukunft.



Aménager les espaces publics

désimperméabiliser
et végétaliser



enlever les obstacles



donner de l'espace à l'eau



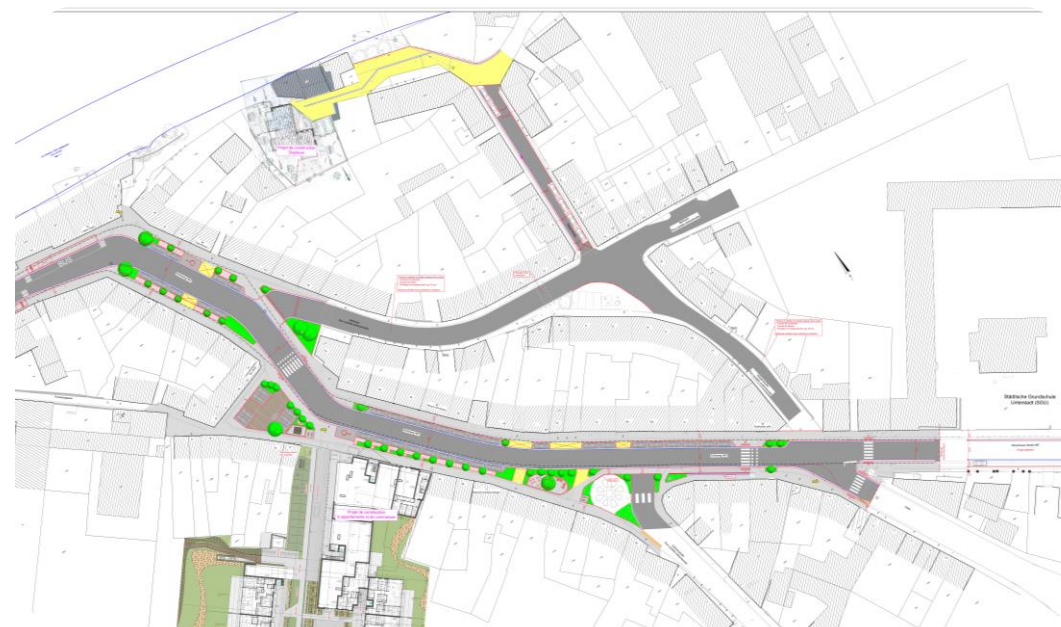
Désimperméabiliser et végétaliser

Malmedyer Straße



Désimperméabiliser et végétaliser

Schilsweg



Enlever les obstacles

ponts et seuils



Donner de l'espace à l'eau

Scheiblerpark





„Scheiblerpark“ parc urbain

- 8.000 m² de zone verte basée sur la nature
- 20 arbres supplémentaires plantés pour créer une trame végétale adaptée au milieu
- des îlots végétaux en faveur de la biodiversité
- qualité de vie pour les habitants du quartier
- corridor vert plus résilient en cas de fortes pluies

Scheiblerpark





La nature est notre alliée !

- Il est difficile de libérer des terrains bâtis.
- Où pouvons-nous encore construire et comment? C'est la question qu'il faut poser.
- Les plans de secteur actuels ne fournissent pas de réponse.



Call for an EU Blue Deal



Violeta Jelić

EESC member



Table of contents



01.

Context

02.

The EESC takes
action

03.

Follow-up strategy



Context



- Increasing water challenges around the world and also in Europe; Implications for economic, social and political stability.
- The water dimension in EU policies is sometimes neglected, often fragmented and is not yet fit to address the challenges ahead.
- The EU is currently not on track to achieve the Sustainable Development Goals linked to water.
 - 9.8 million people in the European Union do not have access to safely managed drinking water on their premises,
 - 6.7 million people in the EU live without sanitary facilities.
 - Water leakage rates in some EU countries reach up to 50 per cent.
- A change of scale is urgently needed

The EESC takes action



- In October 2023, the EESC presented its **call for an EU Blue Deal: a new water strategy for Europe**, based on a set of own-initiative opinions + Declaration
 - Consider water as a strategic priority for the EU
 - EU Blue Deal should be a standalone policy, on a par with the EU Green Deal
 - EU Blue Deal should be in full complementarity to and in synergy with the EU Green Deal and the UN Sustainable Development Goals
 - Calling for the water dimension to be embedded in all EU policies
- The President's **Declaration for an EU Blue Deal** recaps the 15 principles and 21 actions framing the EESC call. It underlines the need for a more comprehensive and strategic approach to water in the EU.

Follow-up strategy



- Objective: to set the **Blue Deal** as a **strategic priority** of the next Commission
- **Joint effort with EU institutions:**
 - Since the start, close collaboration with the **European Parliament**, including a joint letter with the EESC and 36 MEPs to all EU Heads of state and government, calling on them to support an ambitious EU Blue Deal.
 - Complementary work with the **Committee of the Regions**
 - Continued work with **Member States**, international organisations (EIB, UN, FAO...)





- A lot of positive engagement from **stakeholders** and organised civil society as a whole.
- Water will be an important topic in the political agenda of the European Elections campaign, particularly for young generations.
 - 6 March Civil Society Week event with Volonteuropa and EEB on the Blue Deal and youth participation
 - Contribution to EU Green Week and the upcoming campaign on Europe's water future
- Further **EESC opinions** on the Blue Deal in 2024
- EESC fully committed to **set the Blue Deal as a strategic priority of the next Commission**

Discussion



Chris Baker

Wetlands International Europe



Sébastien Dujardin

Université de Namur



Jacques Teller

Université de Liège



Claudia Niessen

Bourgmestre, Eupen



Marc Thirion

SPW ARNE



Violeta Jelić

Secretary General, Croatian Chamber of Trades and Crafts (HOK) and Member of EESC

February 8 & 9, 2024 - Liège – Palais des Congrès



Belgian Presidency of the Council of the European Union

Climate Chance Europe 2024 Wallonia Summit

Thank you!

Adaptation to Climate Change, Nature-based Solutions and Resilience

